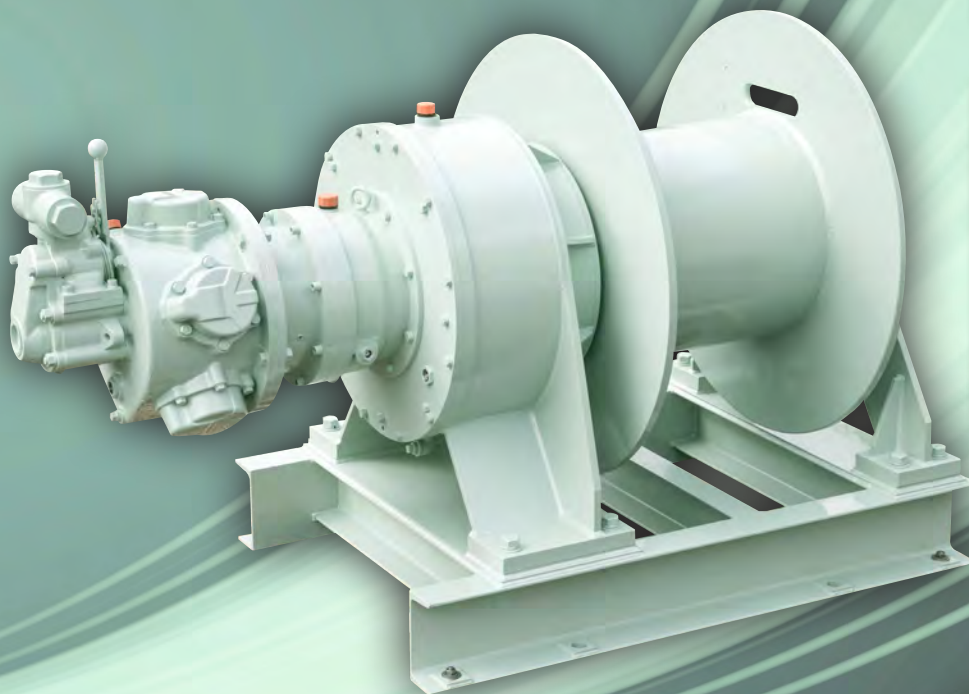




# MICHIGAN PNEUMATIC TOOL

## Air Winches



Serving All Industries

- Petro Chemical
- Construction
- Demolition
- Assembly
- Rental

1-800-521-8104 • [www.michiganpneumatic.com](http://www.michiganpneumatic.com)



Table of Contents

History . . . . . 3

Specifications . . . . . 4

Model No. Identification . . . . . 5

Selection Guide. . . . . 6

Cable Capacity . . . . . 7

MP-W05AA3 Series *1100 lb. Capacity* . . . . . 8

MP-W10220 Series *2200 lb. Capacity* . . . . . 12

MP-W20220 Series *4400 lb. Capacity* . . . . . 20

MP-W3036 Series *6600 lb. Capacity* . . . . . 28

MP-W5036 Series *11000 lb. Capacity* . . . . . 36

MP-AH45 Series *22000 lb. Capacity* . . . . . 44

Guards & Pendant Controls . . . . . 46

Accessories. . . . . 47

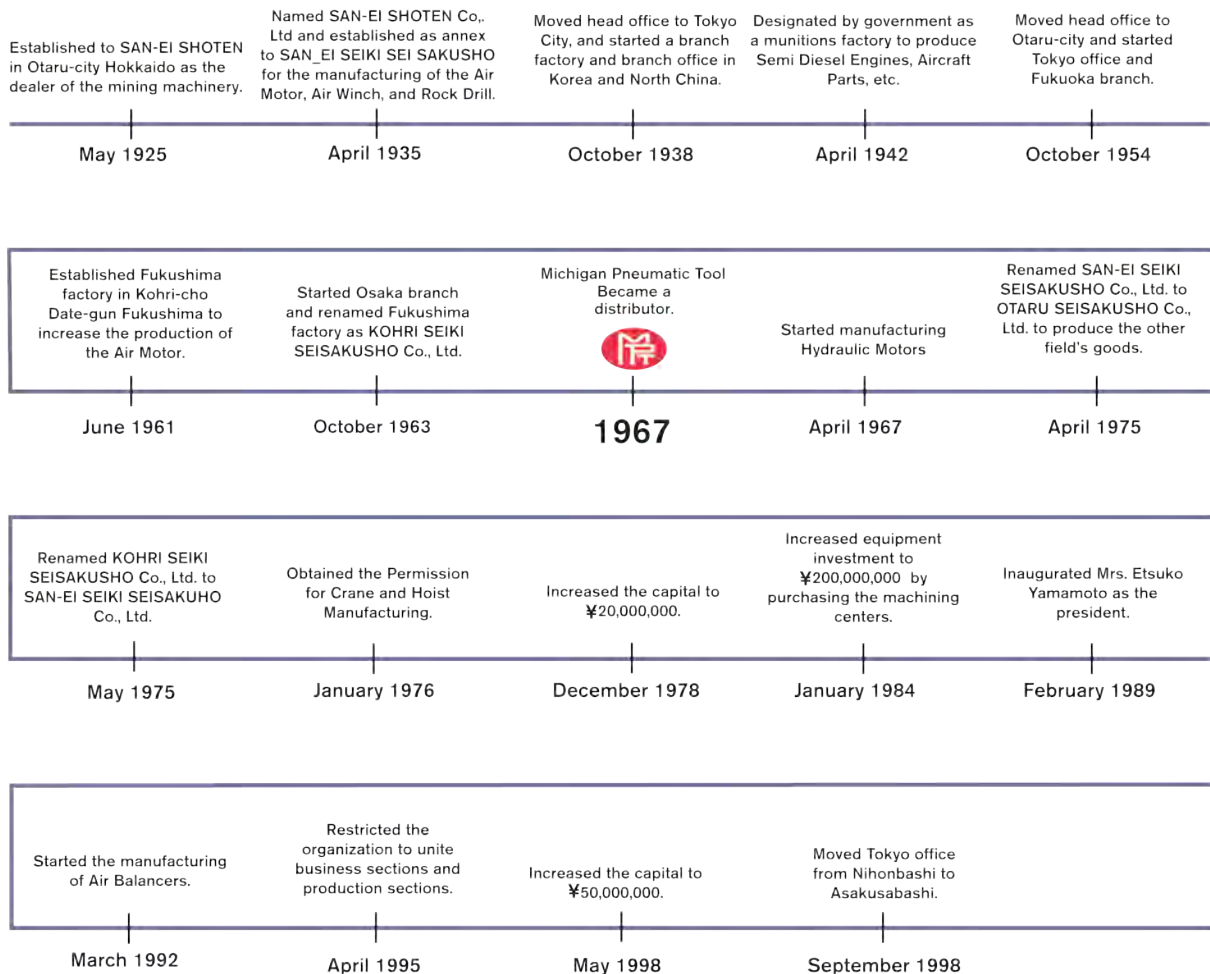


Since 1925, we have been a superior manufacturer of hydraulic and pneumatic machinery. Our products include Air Motors, Air Hoists, Air Winches, Air Balancers, Hydraulic Motors, and more.

Our machinery is designed and manufactured with great quality, and used in fields such as iron manufacturing, ship building, machine manufacturing, chemical plants, oil refineries, mining, construction, automobile manufacturing and more. It is important to us that all of our customers are satisfied. At SAN-EI SEIKI, we develop products for all new and upcoming fields of work. Our products and services are original, unique, and we never stop brainstorming new ideas for machinery equipment.

We are proud of our superior technology and top level facilities.  
We strive to solve your tough problems in all mechanical, pneumatic, and hydraulic areas.

## HISTORY



This equipment is not to be used for lifting, supporting or transporting people, or for lifting or supporting loads over people.



## Specifications

Motor Series	Drum	Motor Output	Capacity	Line Speed at Capacity	Cable Capacity	Weight w/o Rope Manual Brake	Weight w/o Rope Auto Brake	Avg. Air Consumption
MP-W05AA3	Short	2.3 hp	1100 lbs.	62 ft./min.	5/16" x 145 ft. 1/4" x 240 ft.	97 lbs.	104 lbs.	71 cfm
MP-W10220	Short	9.6 hp	2200 lbs.	121 ft./min.	1/2" x 375 ft.	566 lbs.	588 lbs.	191 cfm
	Long				1/2" x 750 ft.	608 lbs.	635 lbs.	
MP-W20220	Short	9.6 hp	4400 lbs.	62 ft./min.	1/2" x 375 ft. 7/16" x 475 ft.	586 lbs.	608 lbs.	191 cfm
	Long				1/2" x 750 ft. 7/16" x 950 ft.	632 lbs.	654 lbs.	
MP-W3036	Short	16.0 hp	6600 lbs.	62 ft./min.	5/8" x 525 ft.	1035 lbs.	1066 lbs.	318 cfm
	Long				5/8" x 1050 ft.	1130 lbs.	1161 lbs.	
MP-W5036	Short	16.0 hp	11000 lbs.	36 ft./min.	7/8" x 375 ft. 3/4" x 500 ft.	1670 lbs.	1716 lbs.	318 cfm
	Long				7/8" x 750 ft. 3/4" x 1000 ft.	1890 lbs.	1923 lbs.	
MP-AH45	Standard	23.0 hp	22000 lbs.	27 ft./min.	1-1/4" x 853 ft.	N/A	3375 lbs.	600 cfm

Figures are shown with supplied air pressure at 90 psi. Capacities rated at full drum.

All San-Ei tuggers feature a marine grade paint specifically designed for use in seaport applications and other harsh environments. With threaded exhaust ports, you can also use the San-Ei air tuggers indoors and divert the exhaust to the exterior or away from hazardous materials or gases.



## Model Number Identification

- C** ..... Clutch (Manual Brake only)  
\*[No Code]
- H** ..... Internal Disc Brake  
\*\*\*[No Code]
- A** ..... Manual Control Throttle (MP-W Series only)  
Self-closing: shuts off automatically when released.
- P** ..... Pendant Control Throttle
- S** ..... Short Drum
- S1** ..... Standard Drum
- L** ..... Long Drum  
(Standard Drum only available on MP-AH Series)

<b>MP-W</b>	<b>20</b>	<b>220</b>	<b>S</b>	<b>A</b>	<b>H</b>	<b>C</b>	<b>MB</b>	<b>G</b>	<b>F</b>	<b>S14590</b>
-------------	-----------	------------	----------	----------	----------	----------	-----------	----------	----------	---------------

Or

**MP-AH**

### Motor:

- 3** ..... DM3  
**220** ..... DM220  
**36** ..... DM36

### Capacity:

- 05** ..... 0.5 ton  
**10** ..... 1.0 ton  
**20** ..... 2.0 ton  
**30** ..... 3.0 ton  
**50** ..... 5.0 ton  
**100** ..... 10.0 ton

### External Brake:

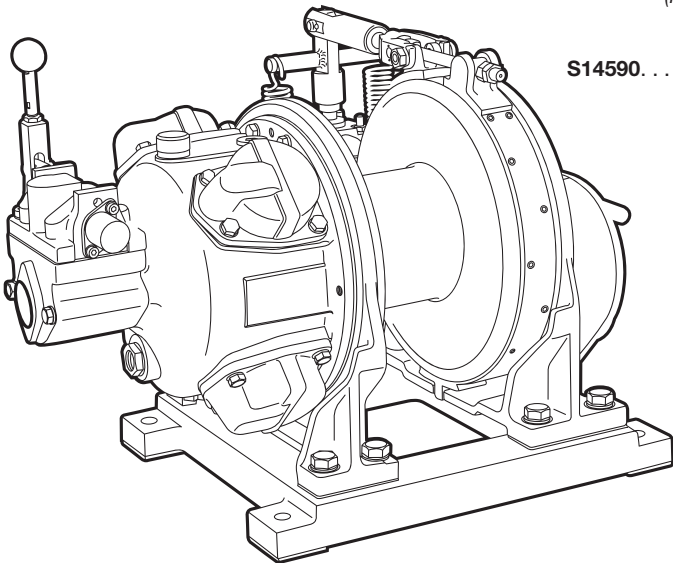
(MP-W Series only)

- AB** ..... Automatic Brake  
**MB** ..... Manual Brake

- G** ..... Guard  
\*\*[No Code]

- F** ..... Support Cage  
(MP-W Series only)  
\*\*\*\*[No Code]

- S14590** ..... Filter /  
Lubricator Kit  
\*\*\*\*\*[No Code]



### [Remarks]

- \* Without Clutch
- \*\* Without Drum Guard
- \*\*\* Single Drum Brake
- \*\*\*\* Without Support Cage
- \*\*\*\*\* Without Filter / Lubricator Kit

This equipment is not to be used for lifting, supporting or transporting people, or for lifting or supporting loads over people.



## Selection Guide

### Rope Capacity and Line Speed

The line speed of an air winch is dependent on the quantity of rope on the drum. The first layer of rope on the drum receives the highest power at the slowest speed. A full drum is up to the maximum speed with the lowest power.

The standard capacity of a winch at half drum: **Ds**

$$Ds = (D0 + Df) \times 1/2$$

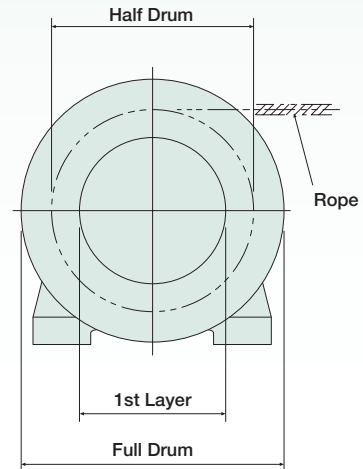
D0 = Inner Drum Diameter

Df = Full Drum Diameter

**1st Layer** - Minimum speed, maximum pull

**Half Drum** - Medium speed, medium pull

**Full Drum** - Maximum speed, minimum pull



### Drum Size

Motor Series	Drum	Inner Drum Diameter	Full Drum Diameter	Drum Length	Rope Anchor Hole
MP-W05AA3	Short	4.72"	8.50"	4.49"	0.39"
MP-W10220	Short	7.09"	16.14"	7.01"	0.63"
MP-W10220	Long	7.09"	16.14"	14.00"	0.63"
MP-W20220	Short	7.09"	16.14"	7.01"	0.63"
MP-W20220	Long	7.09"	16.14"	14.00"	0.63"
MP-W3036	Short	9.45"	20.87"	9.45"	0.79"
MP-W3036	Long	9.45"	20.87"	18.90"	0.79"
MP-W5036	Short	12.99"	23.62"	11.81"	1.10"
MP-W5036	Long	12.99"	23.62"	23.62"	1.10"
MP-AH45	Standard	20.00"	38.58"	27.5i5"	1.50"

### Rope Selection

To determine the size of rope needed for a particular application, use the Safe Working Load specifications from the chart below. The Breaking Strength for each size of rope is listed for additional reference.

Rope Diameter	5/16"	11/32"	3/8"	7/16"	1/2"	9/16"	5/8"	45/64"	3/4"	7/8"	1"
Breaking Strength (tons)	4.42	5.59	6.9	8.6	10.8	13.5	17.7	22.4	27.6	34.6	43.2
Safe Working Load (tons)	0.8	1.1	1.3	1.7	2.1	2.7	3.5	4.4	5.5	6.9	8.6

This equipment is not to be used for lifting, supporting or transporting people, or for lifting or supporting loads over people.



## Cable Capacity

### Rope Length

The maximum rope length, when tightly wound, varies according to the rope diameter for each model. The approximate working rope length is 80% of the lengths listed in the chart below.

Motor Series	Drum	Cable Capacity (tightly wound)									
		1/4" 6.3mm	5/16" 8mm	3/8" 10mm	7/16" 11.2mm	1/2" 12.5mm	5/8" 16mm	3/4" 20mm	7/8" 22.4mm	1" 25.4mm	1-1/4" 31.7mm
MP-W05AA3	Short	195 ft.	145 ft.	-	-	-	-	-	-	-	-
MP-W10220	Short	-	-	670 ft.	475 ft.	375 ft.	-	-	-	-	-
MP-W10220	Long	-	-	1340 ft.	950 ft.	750 ft.	-	-	-	-	-
MP-W20220	Short	-	-	-	475 ft.	375 ft.	-	-	-	-	-
MP-W20220	Long	-	-	-	950 ft.	750 ft.	-	-	-	-	-
MP-W3036	Short	-	-	-	-	-	525 ft.	-	-	-	-
MP-W3036	Long	-	-	-	-	-	1050 ft.	-	-	-	-
MP-W5036	Short	-	-	-	-	-	-	500 ft.	375 ft.	-	-
MP-W5036	Long	-	-	-	-	-	-	1000 ft.	750 ft.	-	-
MP-AH45	Standard	-	-	-	-	-	-	-	-	1300 ft.	853 ft.

### Fleet Angle

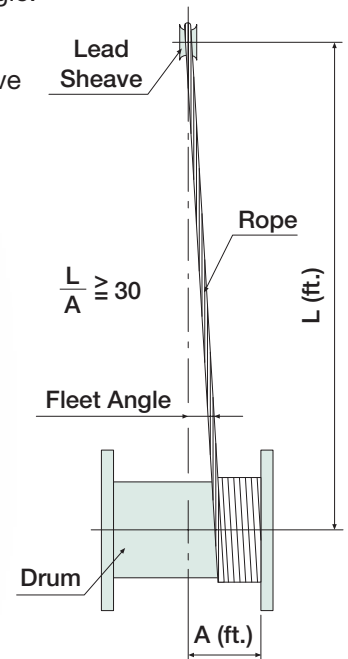
The correct fleet angle is necessary to keep the rope straight on the drum during wind-up. The angle between the center line through the lead sheave and the centerline of the rope leading to the drum is called the fleet angle. Please refer to the figure at the right.

The maximum fleet angle is 2°. To obtain the best angle, the lead sheave must be positioned using the following formula:

$$L \text{ (ft.)} = A \text{ (ft.)} \times 30$$



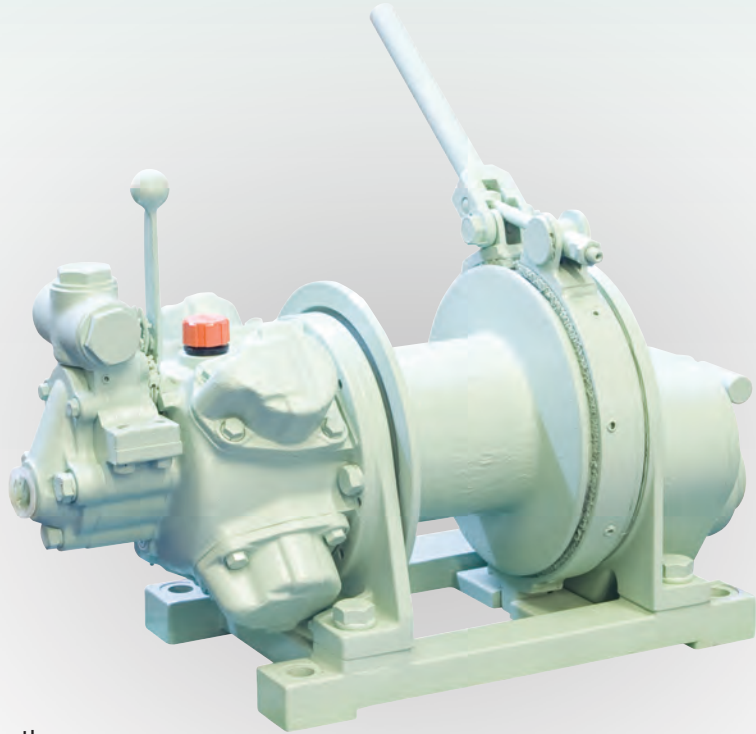
MP-W20220LAAB Long Drum Tugger w/ Autobrake



This equipment is not to be used for lifting, supporting or transporting people, or for lifting or supporting loads over people.



## 1100 lb. Short Drum Winch w/ Manual Brake

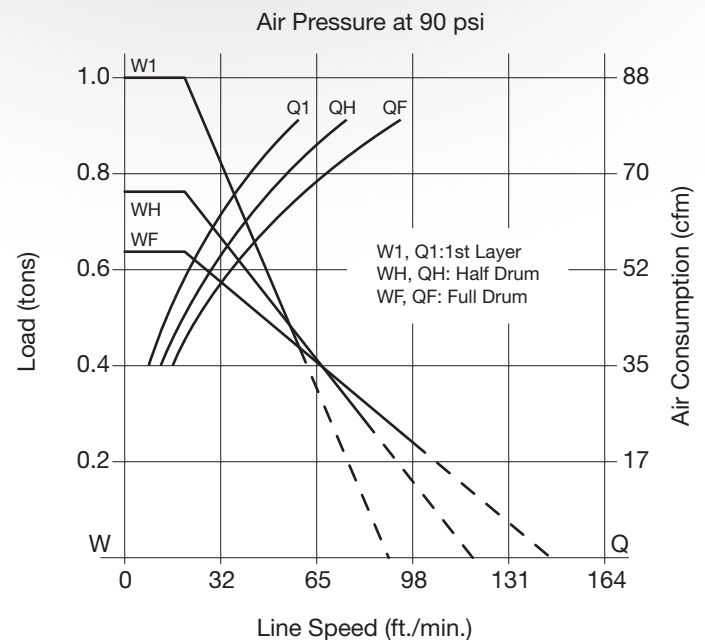


The MP-W05AA3 series tugger is also known as the “Baby Tugger” and is capable of lifting 1100 lbs. This cast aluminum, lightweight, compact tugger is designed for low air consumption and high efficiency. Ideal for gasoline tank farm construction, water tower erection, petrochemical, marine and oil platform work. The 4-piston motor allows for controlled maneuvering of the load. In addition, the motor can be rotated, allowing the MP-W05AA3 series air tuggers to be ceiling or wall mounted for unique applications.

The MP-W05AA3 series features the only “baby tugger” with a 3-piece valve assembly, which allows the technicians to repair the throttle valve or rotary valve independently of each other, and more importantly, without removing the entire motor from the frame assembly, unlike competitive units on the market.

## Specifications

Capacity .....	1100 lbs.
Line Speed at Capacity .....	62 ft.
Cable Capacity .....	195 ft. of 1/4"
	145 ft. of 5/16"
Weight w/o Rope .....	97 lbs.
Air Inlet Thread .....	3/4"



**This equipment is not to be used for lifting, supporting or transporting people, or for lifting or supporting loads over people.**





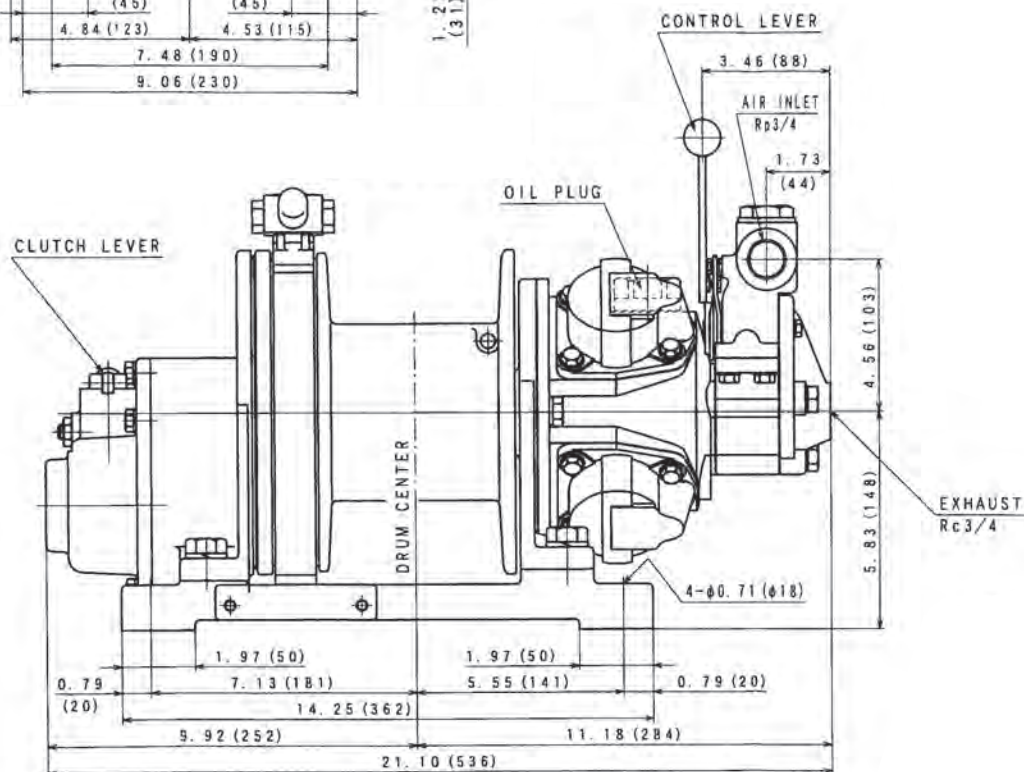
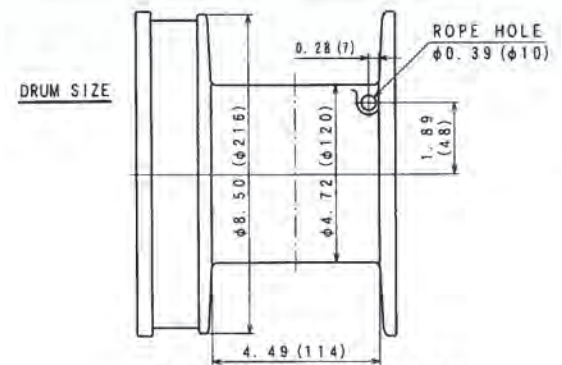
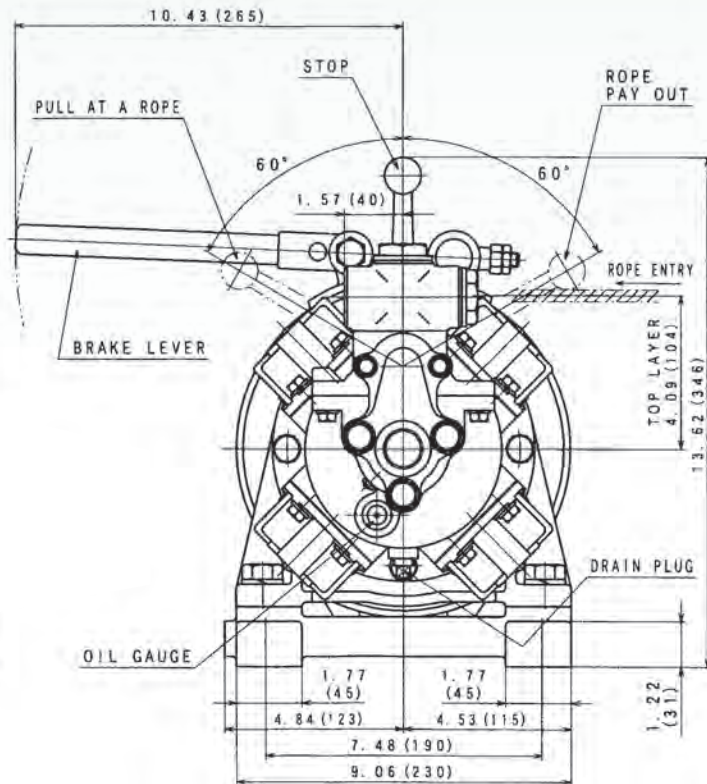
# Model MP-W05AA3SACMB

## 1100 lb. Short Drum Winch w/ Manual Brake

### SPECIFICATIONS (at Half Drum)

Motor Output	Capacity	Line Speed at Capacity	Cable Capacity	Weight w/o Rope	Avg. Air Consumption @ 90 psi
2.3 hp	1100 lbs.	62 ft./min.	5/16 in. x 145 ft.	97 lbs.	71 cfm

Drawing Dimensions in Inches (millimeters listed in brackets)



This equipment is not to be used for lifting, supporting or transporting people, or for lifting or supporting loads over people.





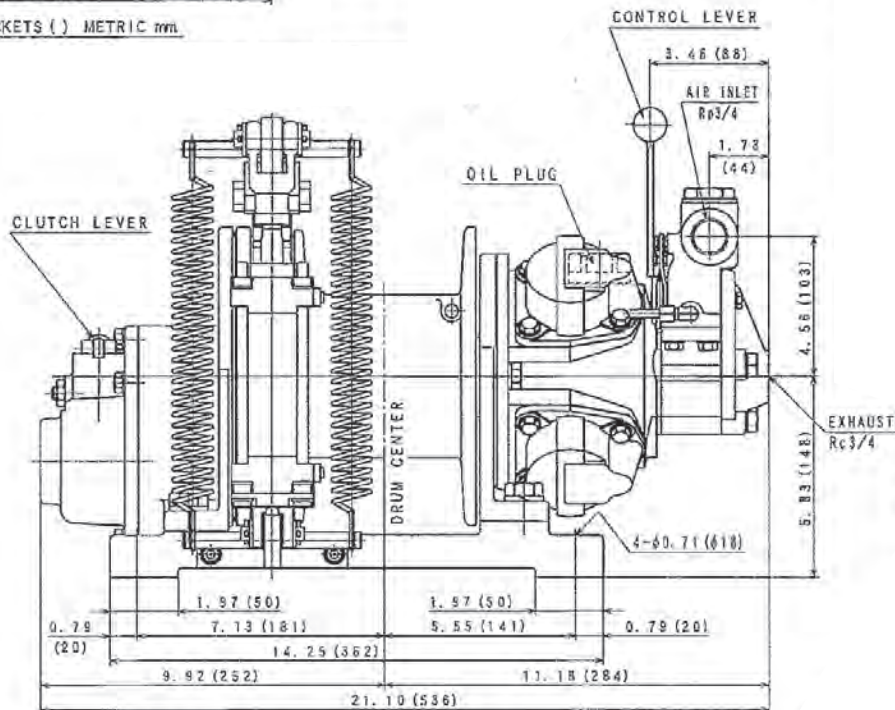
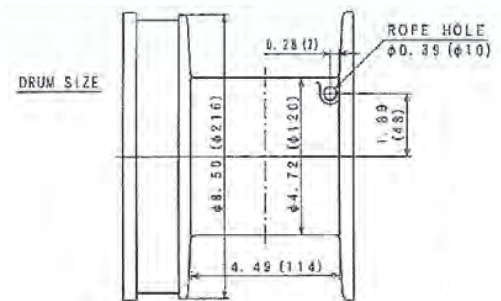
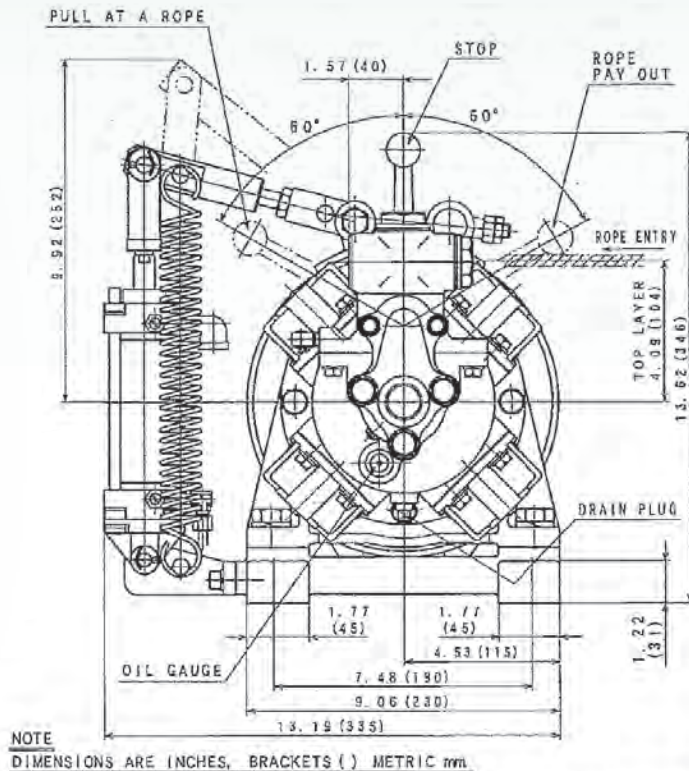
# Model MP-W05AA3SAAB

## 1100 lb. Short Drum Winch w/ Auto Brake

### SPECIFICATIONS (at Half Drum)

Motor Output	Capacity	Line Speed at Capacity	Cable Capacity	Weight w/o Rope	Avg. Air Consumption @ 90 psi
2.3 hp	1100 lbs.	62 ft./min.	5/16 in. x 145 ft.	104 lbs.	71 cfm

Drawing Dimensions in Inches (millimeters listed in brackets)

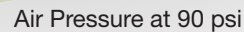


This equipment is not to be used for lifting, supporting or transporting people, or for lifting or supporting loads over people.





## 2200 lb. Short Drum Winch w/ Manual Brake



The graph plots Load (tons) on the left Y-axis (0.5 to 2.0) and Air Consumption (cfm) on the right Y-axis (70 to 282) against Line Speed (ft./min.) on the X-axis (0 to 328). Four curves represent different drum types and layers: W1 (1st Layer, solid line), WH (Half Drum, solid line), Q1 (1st Layer, solid line), and QH (Half Drum, solid line). Two dashed lines represent WF (Full Drum) and QF (Full Drum). The curves show that load generally decreases as line speed increases, while air consumption increases with line speed.

Line Speed (ft./min.)	W1 Load (tons)	WH Load (tons)	Q1 Load (tons)	QH Load (tons)	WF Air (cfm)	QF Air (cfm)
0	2.0	1.6	1.2	1.0	141	141
65	2.0	1.6	1.2	1.0	141	141
131	1.0	1.2	1.0	0.8	70	70
196	0.5	0.6	0.5	0.4	70	70
262	0.2	0.3	0.2	0.1	70	70
328	0.1	0.2	0.1	0.0	70	70

Capacity	2200 lbs.
Line Speed at Capacity	121 ft.
Cable Capacity	670 ft. of 3/8"
	475 ft. of 7/16"
	375 ft. of 1/2"
Weight w/o Rope	566 lbs.
Air Inlet Thread	1"

12





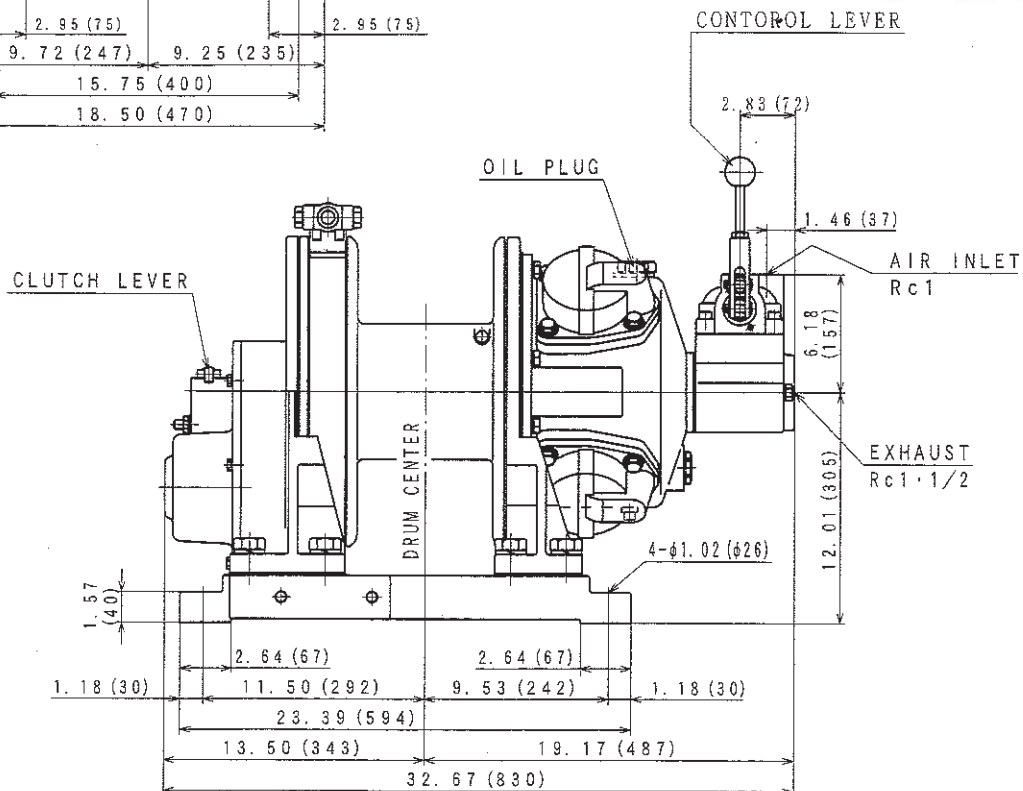
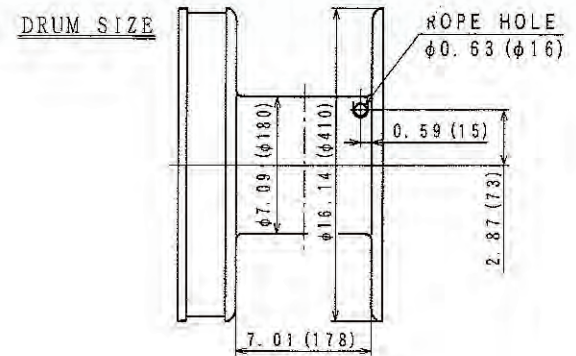
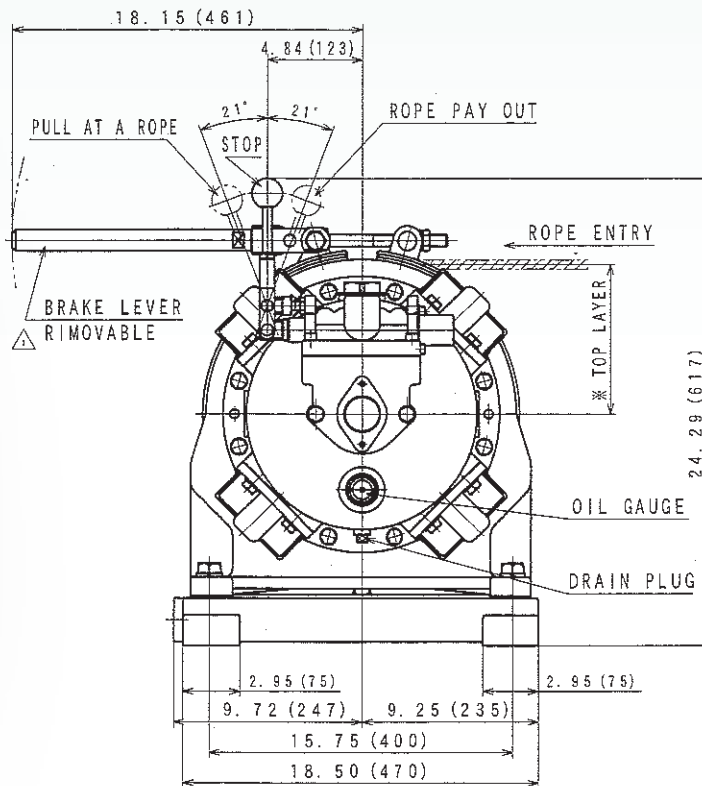
# Model MP-W10220SACMB

## 2200 lb. Short Drum Winch w/ Manual Brake

### SPECIFICATIONS (at Half Drum)

Motor Output	Capacity	Line Speed at Capacity	Cable Capacity	Weight w/o Rope	Avg. Air Consumption @ 90 psi
9.6 hp	2200 lbs.	121 ft./min.	3/8 in. x 670 ft. 7/16 in. x 475 ft. 1/2 in. x 370 ft.	566 lbs.	191 cfm

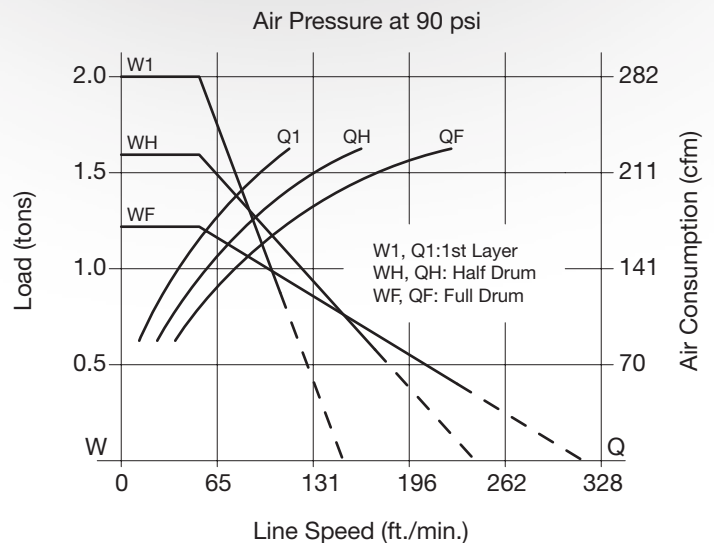
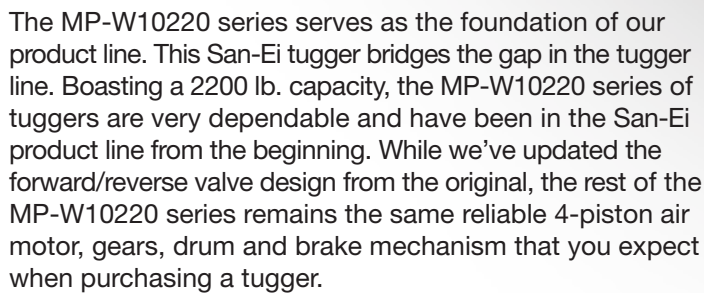
Drawing Dimensions in Inches (millimeters listed in brackets)



This equipment is not to be used for lifting, supporting or transporting people, or for lifting or supporting loads over people.



## 2200 lb. Short Drum Winch w/ Auto Brake



## Specifications

Capacity	2200 lbs.
Line Speed at Capacity	121 ft.
Cable Capacity	670 ft. of 3/8"
	475 ft. of 7/16"
	375 ft. of 1/2"
Weight w/o Rope	588 lbs.
Air Inlet Thread	1"

**This equipment is not to be used for lifting, supporting or transporting people, or for lifting or supporting loads over people.**



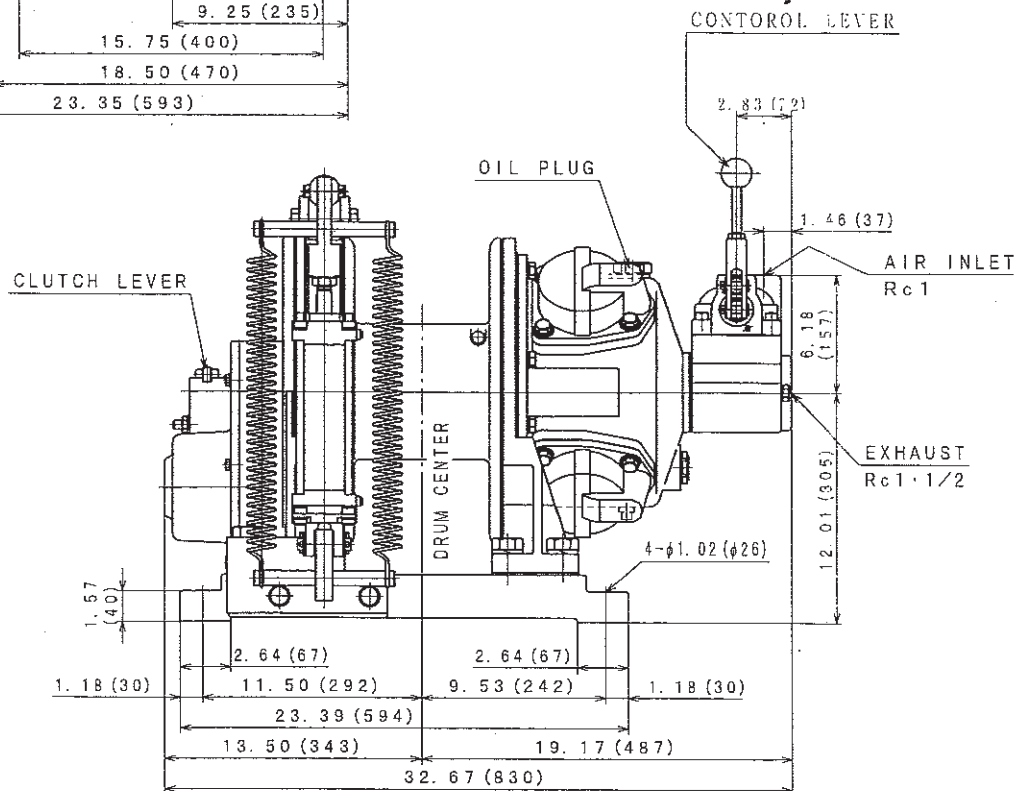
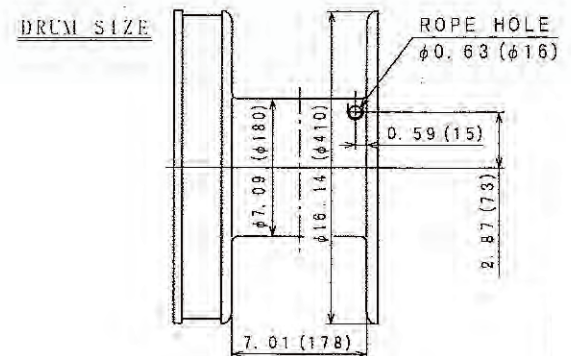
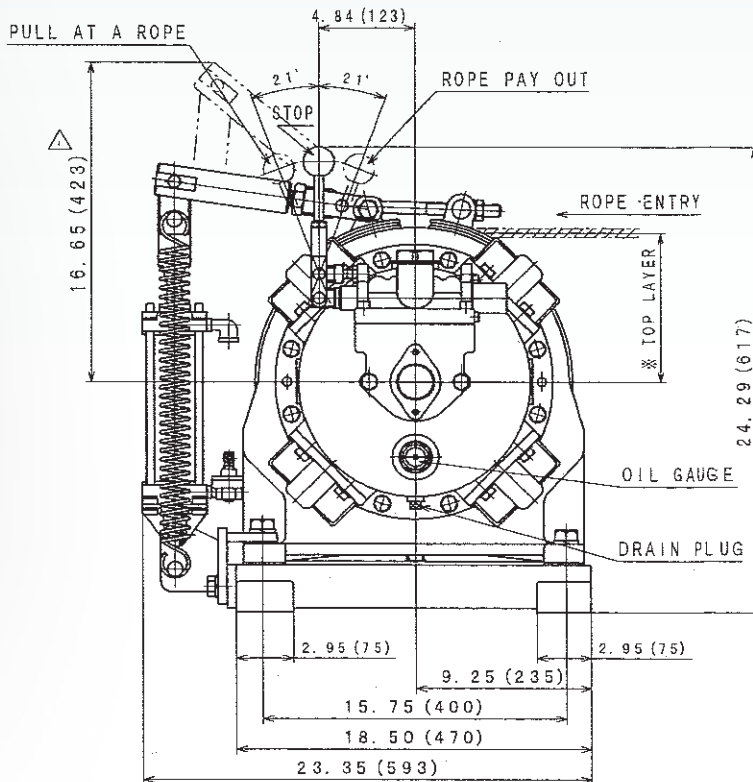
# Model MP-W10220SAAB

## 2200 lb. Short Drum Winch w/ Auto Brake

### SPECIFICATIONS (at Half Drum)

Motor Output	Capacity	Line Speed at Capacity	Cable Capacity	Weight w/o Rope	Avg. Air Consumption @ 90 psi
9.6 hp	2200 lbs.	121 ft./min.	3/8 in. x 670 ft. 7/16 in. x 475 ft. 1/2 in. x 375 ft.	588 lbs.	191 cfm

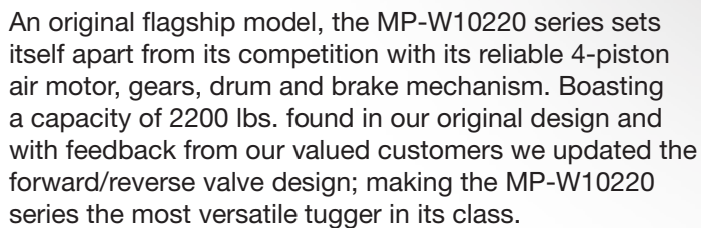
Drawing Dimensions in Inches (millimeters listed in brackets)



This equipment is not to be used for lifting, supporting or transporting people, or for lifting or supporting loads over people.



## 2200 lb. Long Drum Winch w/ Manual Brake



Capacity	2200 lbs.
Line Speed at Capacity	121 ft.
Cable Capacity	1340 ft. of 3/8"
	950 ft. of 7/16"
	750 ft. of 1/2"
Weight w/o Rope	608 lbs.
Air Inlet Thread	1"

**This equipment is not to be used for lifting, supporting or transporting people, or for lifting or supporting loads over people.**





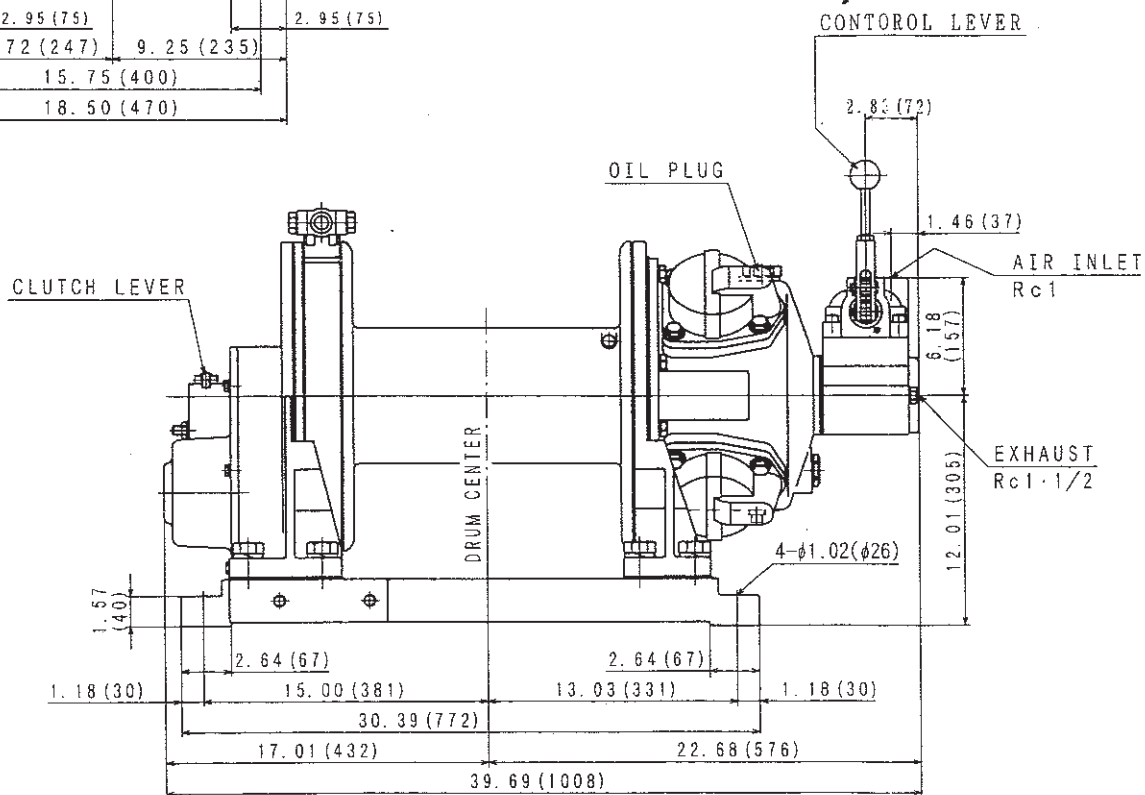
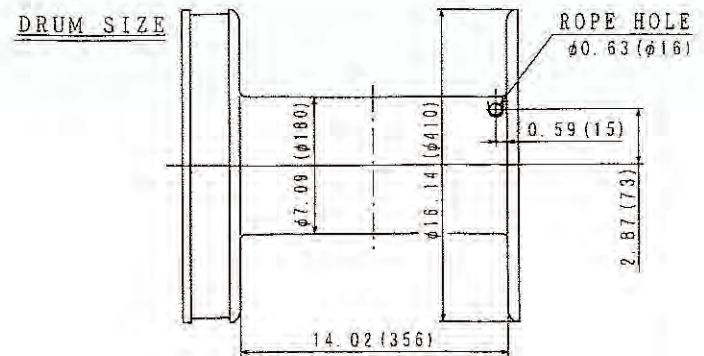
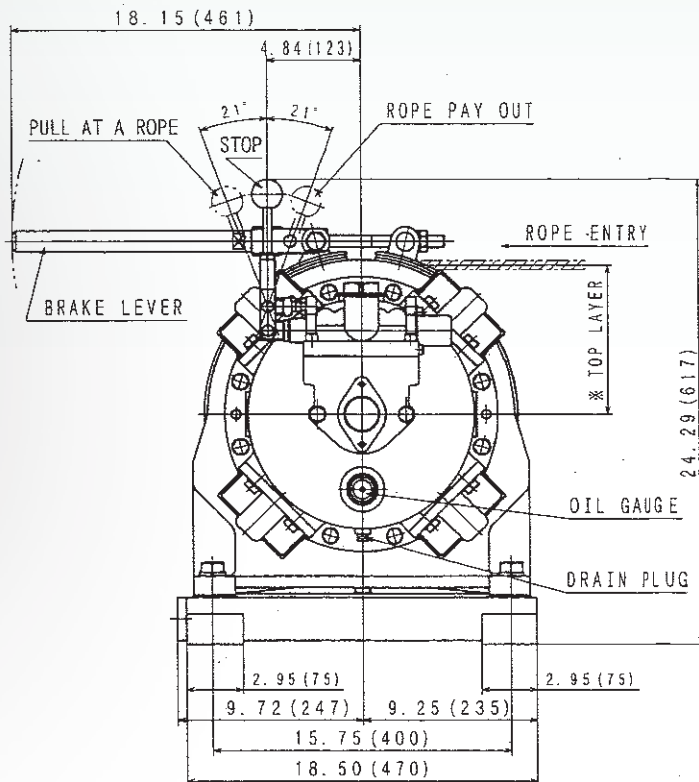
# Model MP-W10220LACMB

## 2200 lb. Long Drum Winch w/ Manual Brake

### SPECIFICATIONS (at Half Drum)

Motor Output	Capacity	Line Speed at Capacity	Cable Capacity	Weight w/o Rope	Avg. Air Consumption @ 90 psi
9.6 hp	2200 lbs.	121 ft./min.	3/8 in. x 1340 ft. 7/16 in. x 950 ft. 1/2 in. x 750 ft.	608 lbs.	191 cfm

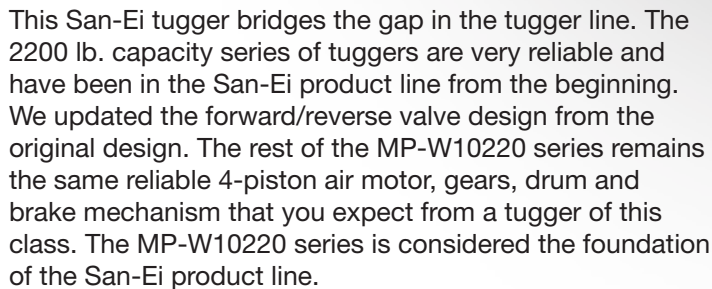
Drawing Dimensions in Inches (millimeters listed in brackets)



This equipment is not to be used for lifting, supporting or transporting people, or for lifting or supporting loads over people.



## 2200 lb. Long Drum Winch w/ Auto Brake



Capacity	2200 lbs.
Line Speed at Capacity	121 ft.
Cable Capacity	1340 ft. of 3/8"
	950 ft. of 7/16"
	750 ft. of 1/2"
Weight w/o Rope	635 lbs.
Air Inlet Thread	1"

**This equipment is not to be used for lifting, supporting or transporting people, or for lifting or supporting loads over people.**



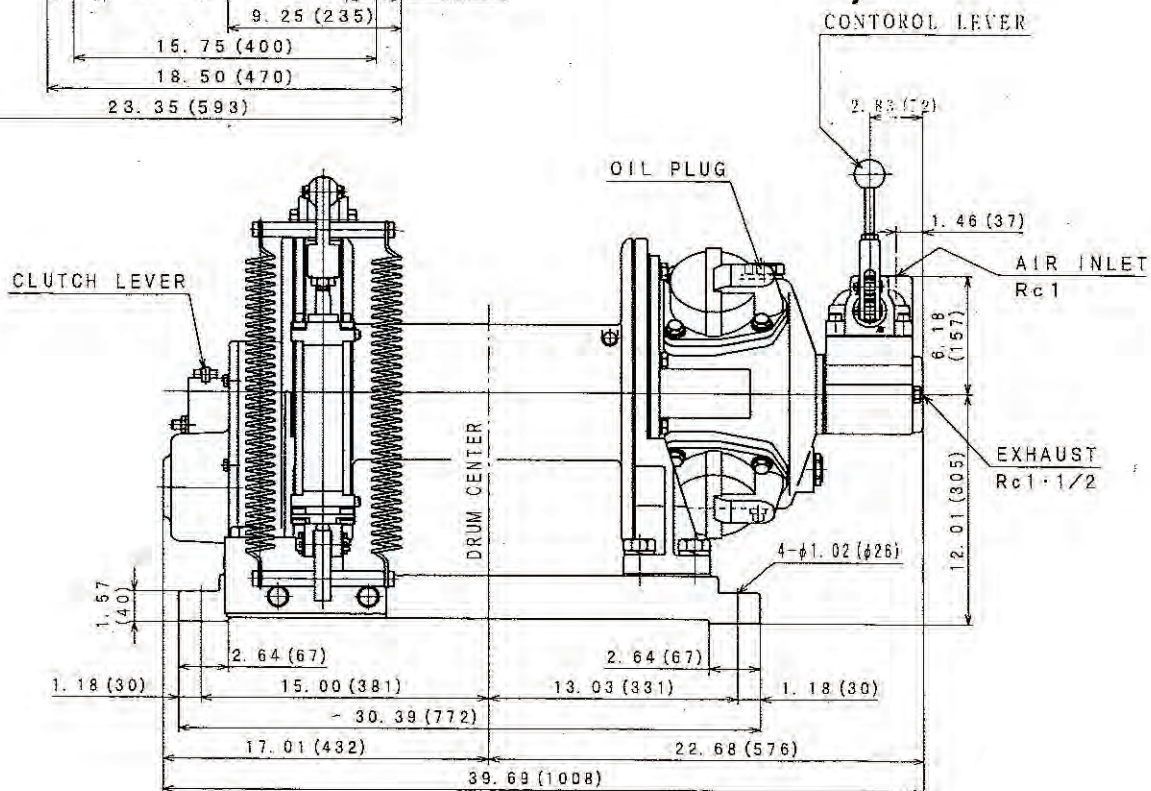
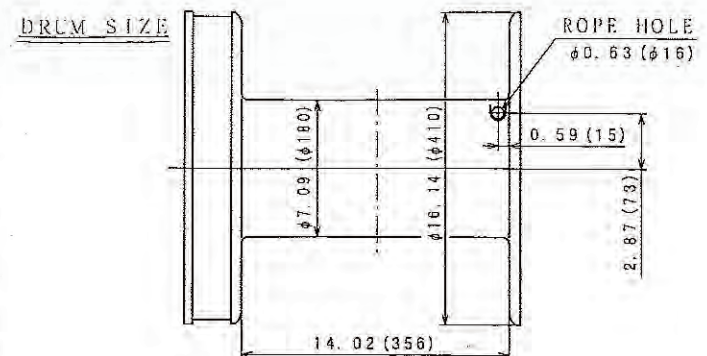
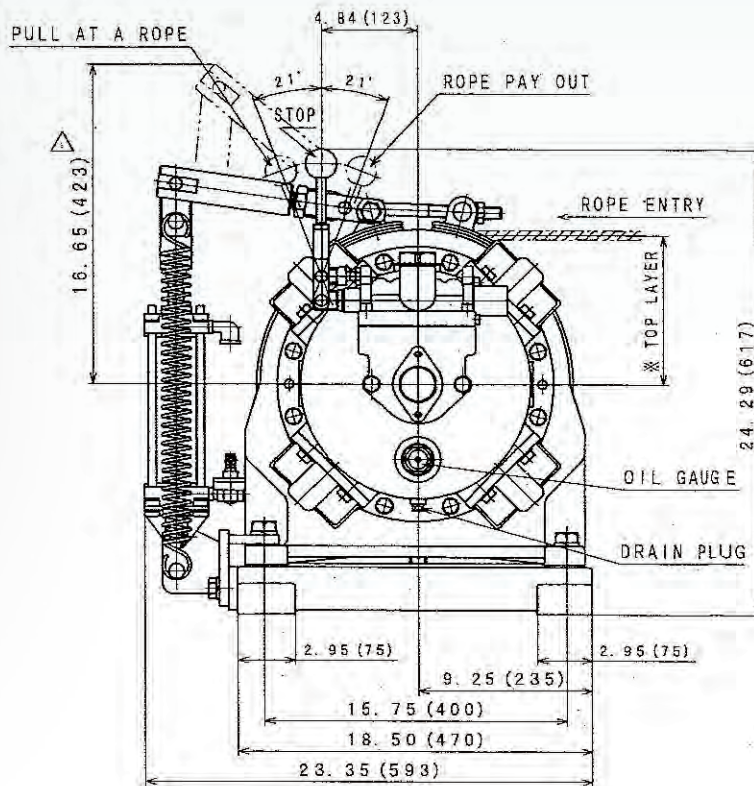
# Model MP-W10220LAAB

## 2200 lb. Long Drum Winch w/ Auto Brake

### SPECIFICATIONS (at Half Drum)

Motor Output	Capacity	Line Speed at Capacity	Cable Capacity	Weight w/o Rope	Avg. Air Consumption @ 90 psi
9.6 hp	2200 lbs.	121 ft./min.	3/8 in. x 1340 ft. 7/16 in. x 950 ft. 1/2 in. x 750 ft.	635 lbs.	191 cfm

Drawing Dimensions in Inches (millimeters listed in brackets)



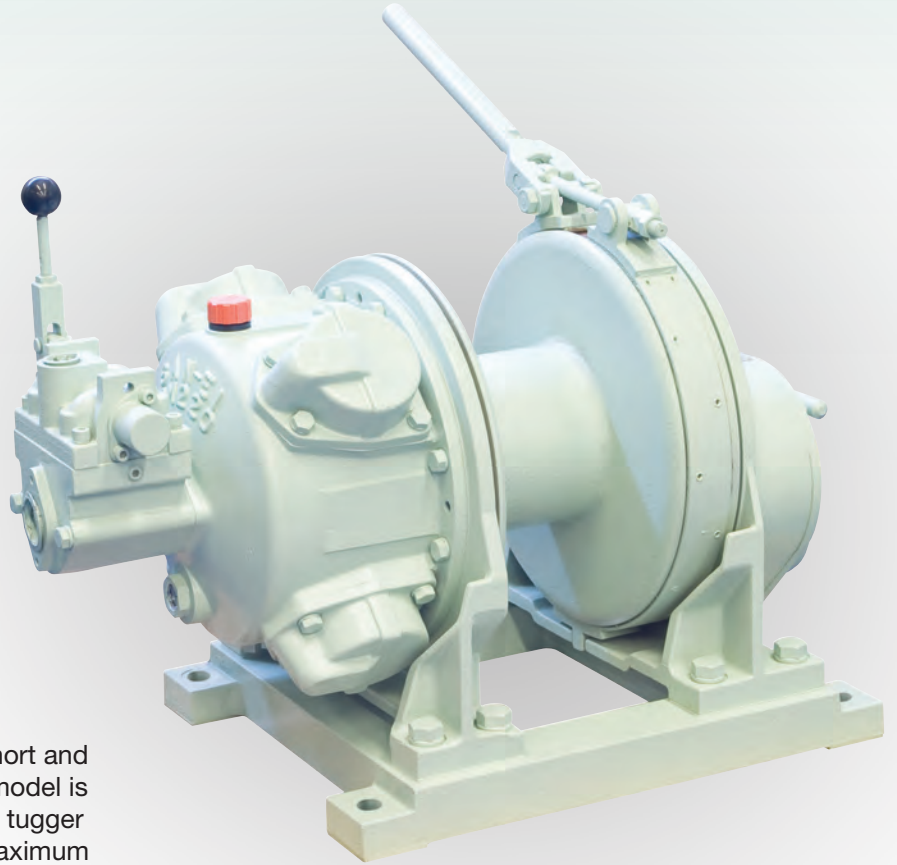
This equipment is not to be used for lifting, supporting or transporting people, or for lifting or supporting loads over people.



San-Ei Air Winches

# Model MP-W20220SACMB

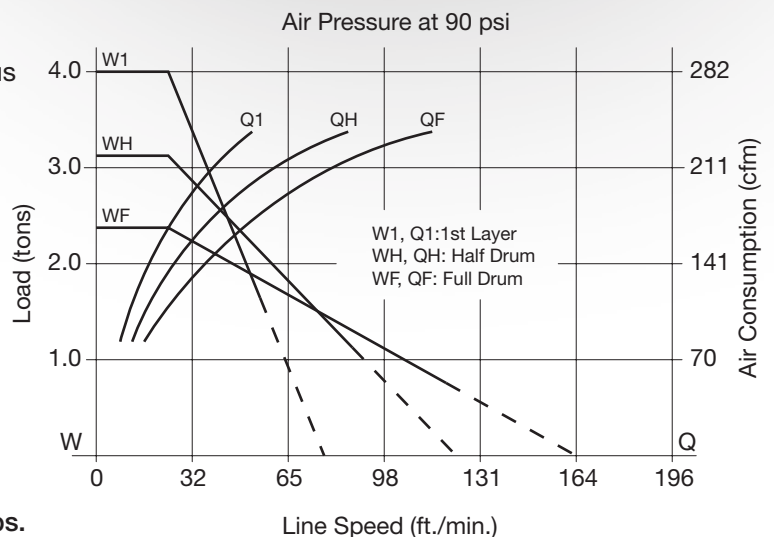
4400 lb. Short Drum Winch w/ Manual Brake



The MP-W20220 series tuggers are available in short and long drum configuration. This San-Ei short drum model is the most durable and dependable in the field. Our tugger can be mounted in many confined areas where maximum lifting and rope capacity is required due to its extremely small footprint. The 4-piston motor allows for controlled load placement and reliable operation in the most rigorous conditions.

## Specifications

Capacity ..... 4400 lbs.  
Line Speed at Capacity ..... 62 ft.  
Cable Capacity ..... 475 ft. of 7/16"  
375 ft. of 1/2"  
Weight w/o Rope ..... 586 lbs.  
Air Inlet Thread ..... 1"



This equipment is not to be used for lifting, supporting or transporting people, or for lifting or supporting loads over people.





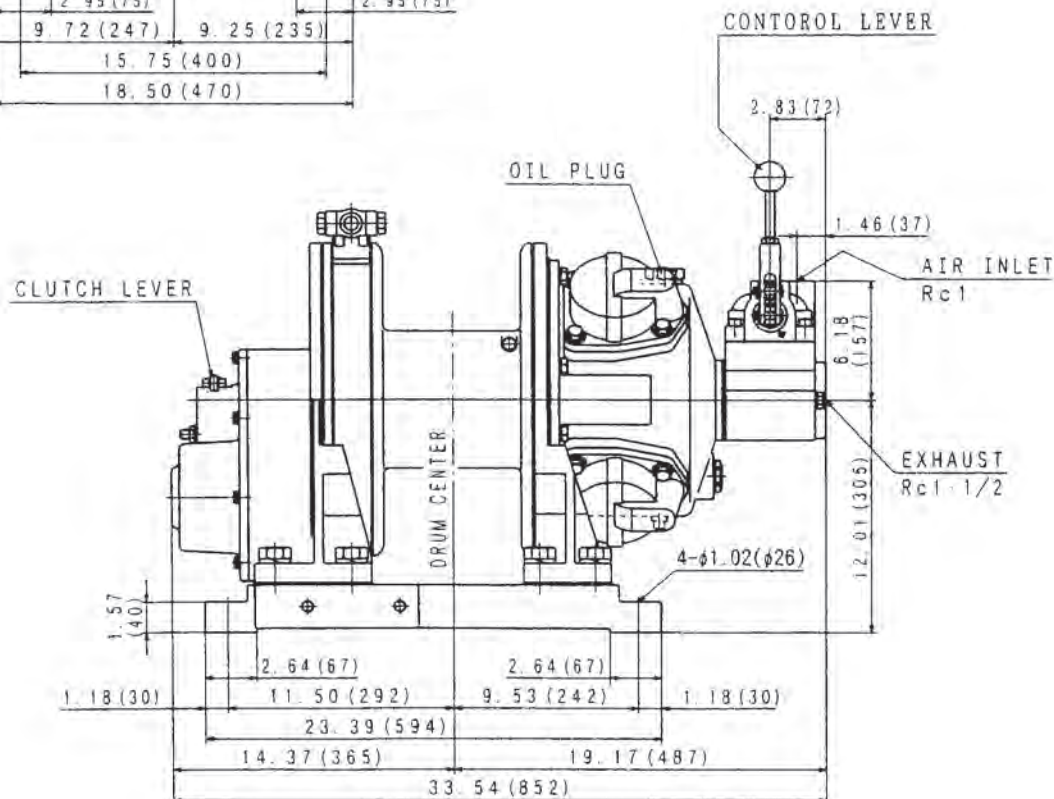
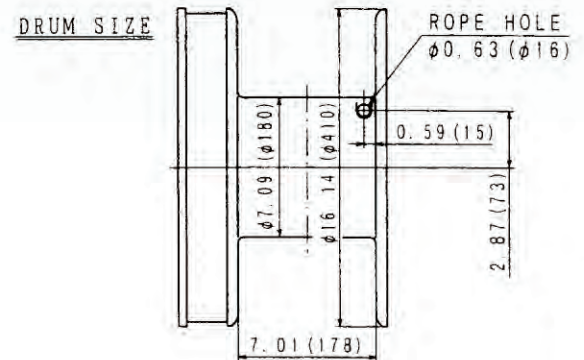
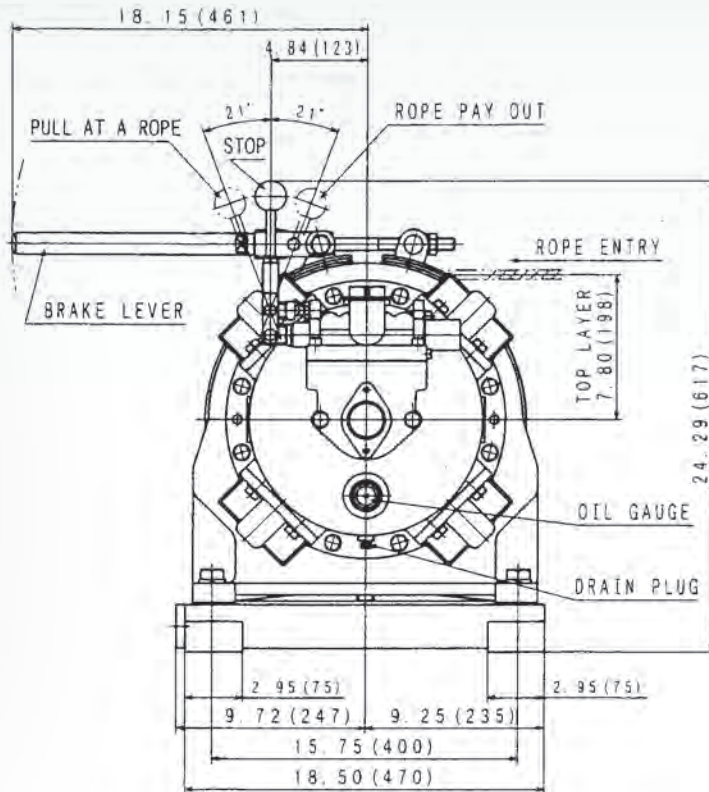
# Model MP-W20220SACMB

## 4400 lb. Short Drum Winch w/ Manual Brake

### SPECIFICATIONS (at Half Drum)

Motor Output	Capacity	Line Speed at Capacity	Cable Capacity	Weight w/o Rope	Avg. Air Consumption @ 90 psi
9.6 hp	4400 lbs.	62 ft./min.	7/16 in. x 475 ft. 1/2 in. x 375 ft.	586 lbs.	191 cfm

Drawing Dimensions in Inches (millimeters listed in brackets)

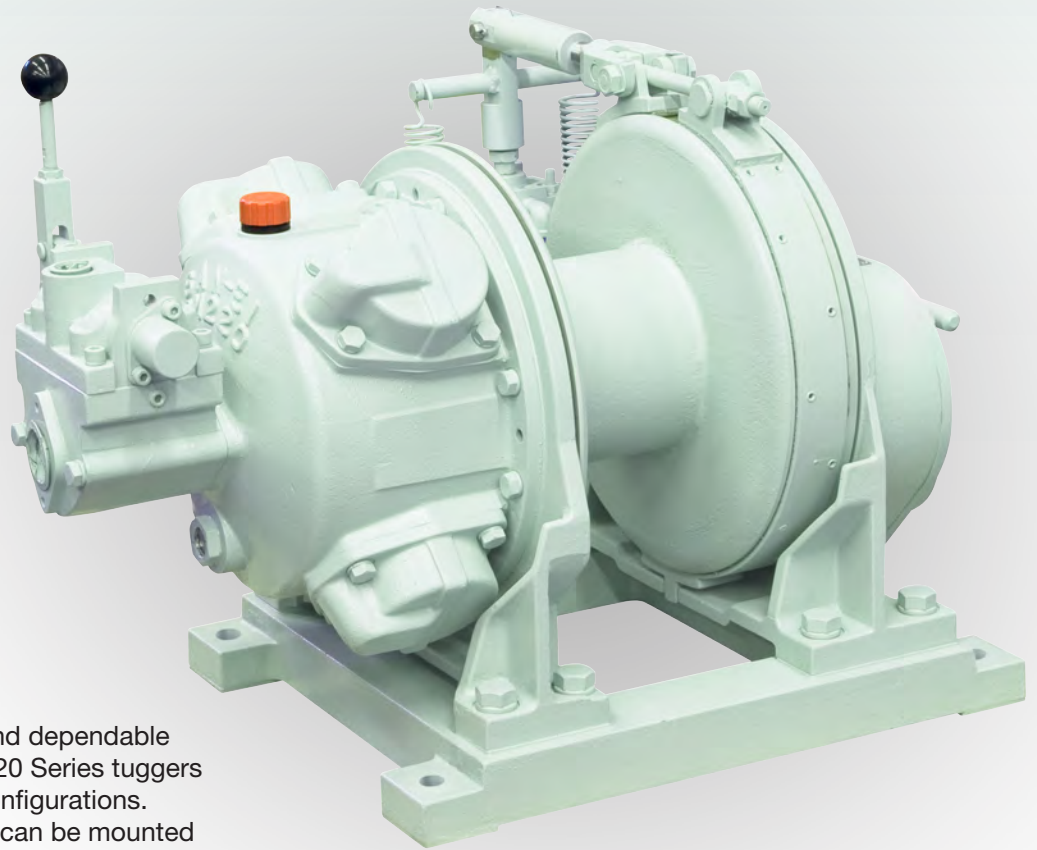


This equipment is not to be used for lifting, supporting or transporting people, or for lifting or supporting loads over people.

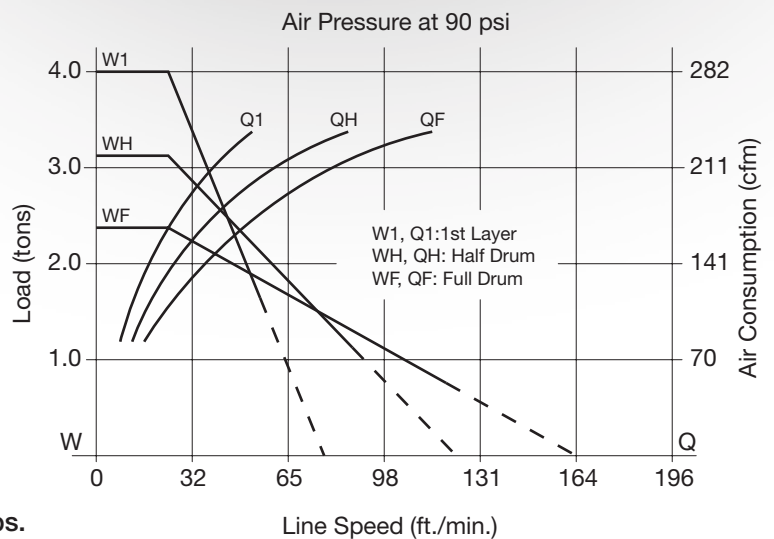


# Model MP-W20220SAAB

4400 lb. Short Drum Winch w/ Auto Brake



San-Ei tuggers are the most durable and dependable tuggers in the field today. The MP-20220 Series tuggers are available in short and long drum configurations. Boasting a small foot print, this tugger can be mounted in many confined areas where maximum lifting and rope capacity is required. The 4-piston motor allows for controlled load placement and reliable operation in the most rigorous conditions.



## Specifications

Capacity ..... 4400 lbs.  
Line Speed at Capacity ..... 62 ft.  
Cable Capacity ..... 475 ft. of 7/16"  
..... 375 ft. of 1/2"  
Weight w/o Rope ..... 608 lbs.  
Air Inlet Thread ..... 1"

This equipment is not to be used for lifting, supporting or transporting people, or for lifting or supporting loads over people.



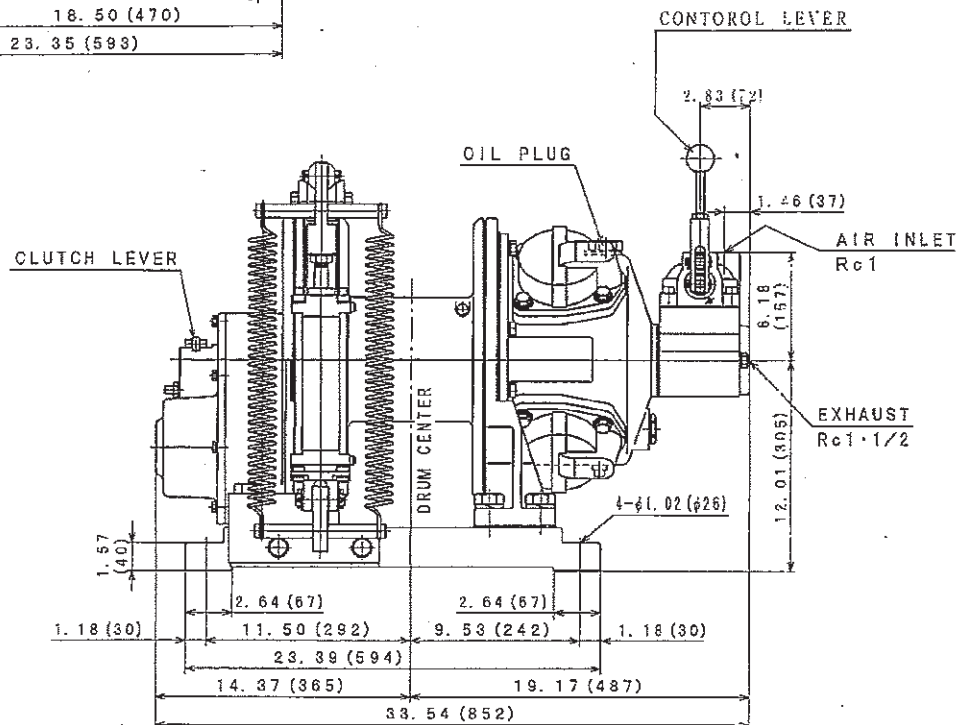
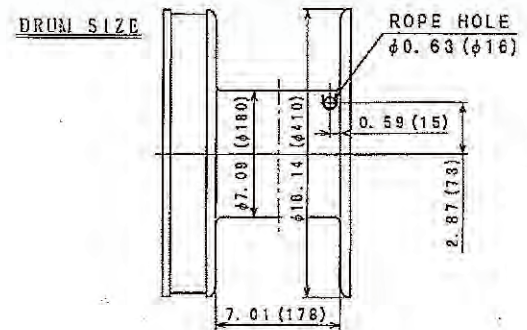
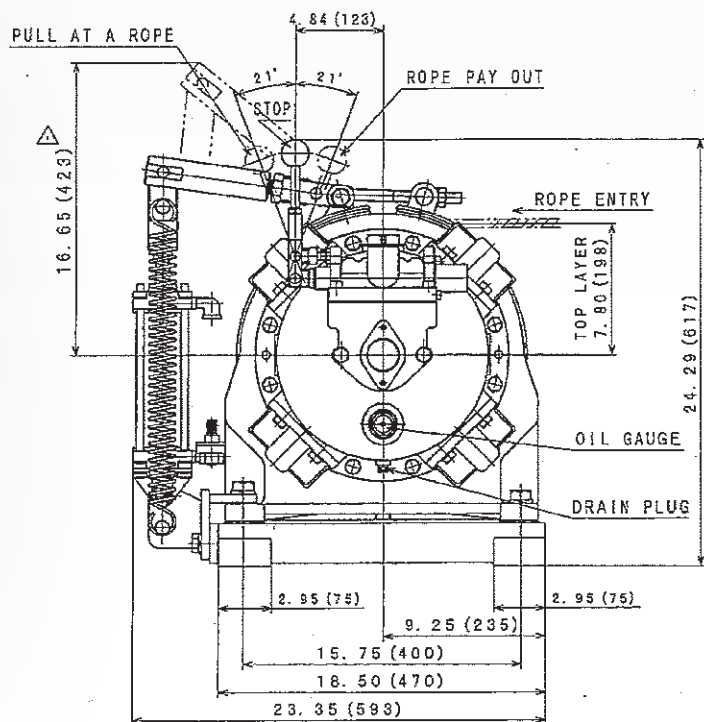
# Model MP-W20220SAAB

## 4400 lb. Short Drum Winch w/ Auto Brake

### SPECIFICATIONS (at Half Drum)

Motor Output	Capacity	Line Speed at Capacity	Cable Capacity	Weight w/o Rope	Avg. Air Consumption @ 90 psi
9.6 hp	4400 lbs.	62 ft./min.	7/16 in. x 475 ft. 1/2 in. x 375 ft.	608 lbs.	191 cfm

Drawing Dimensions in Inches (millimeters listed in brackets)



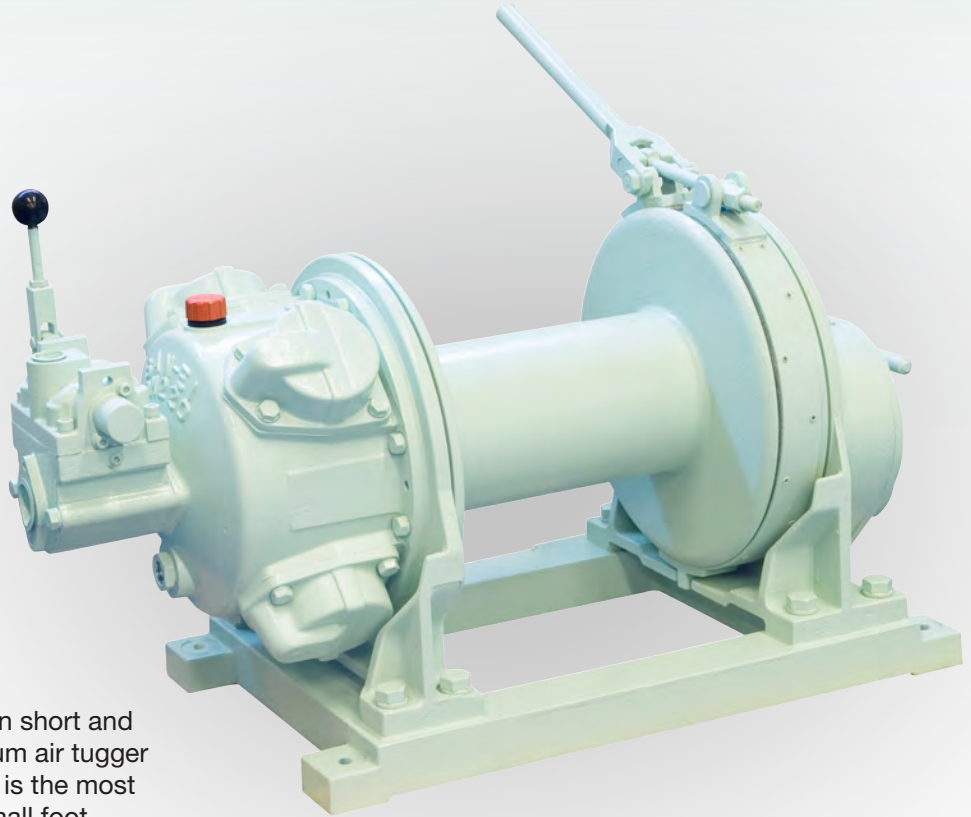
This equipment is not to be used for lifting, supporting or transporting people, or for lifting or supporting loads over people.



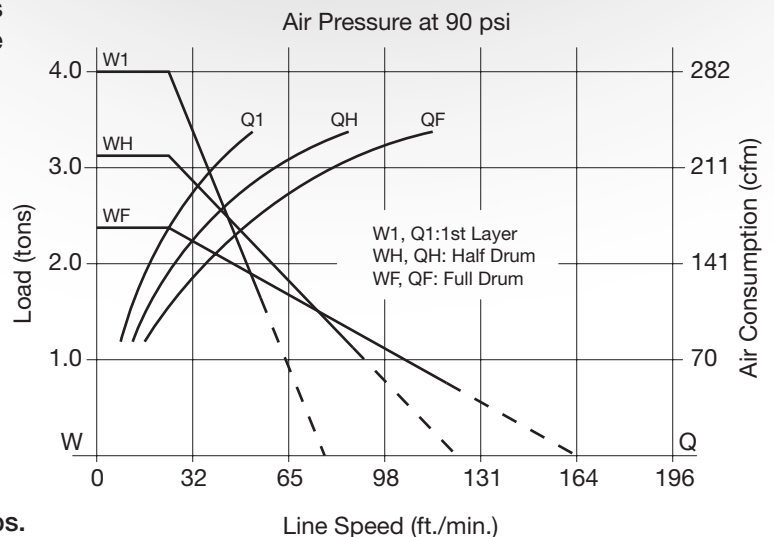
San-Ei Air Winches

# Model MP-W20220LACMB

4400 lb. Long Drum Winch w/ Manual Brake



Our MP-W20220 series tuggers are available in short and long drum configuration. The 4400 lb. long drum air tugger is our most popular model. This San-Ei model is the most durable and dependable in the field. With a small foot print, this tugger can be mounted in many confined areas where maximum lifting and rope capacity is required. The 4-piston motor allows for controlled load placement and reliable operation in the most rigorous conditions.



## Specifications

Capacity ..... 4400 lbs.  
Line Speed at Capacity ..... 62 ft.  
Cable Capacity ..... 950 ft. of 7/16"  
750 ft. of 1/2"  
Weight w/o Rope ..... 632 lbs.  
Air Inlet Thread ..... 1"

This equipment is not to be used for lifting, supporting or transporting people, or for lifting or supporting loads over people.





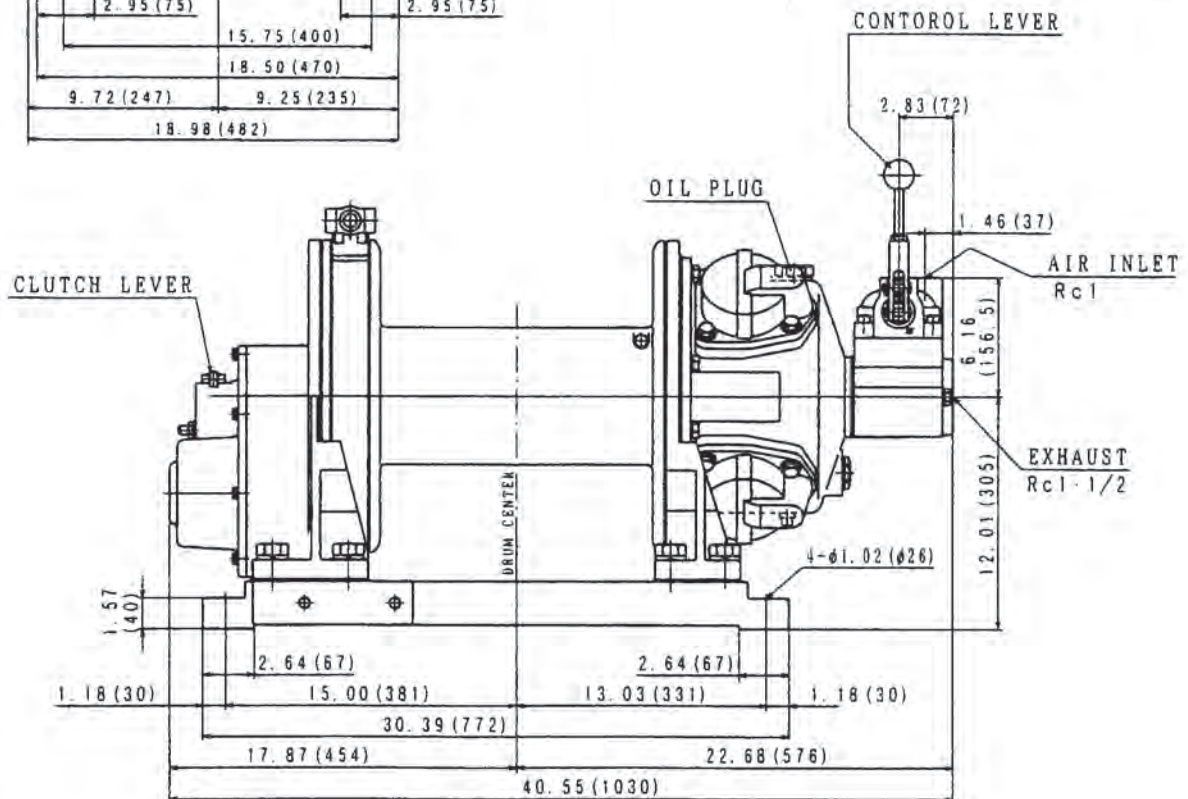
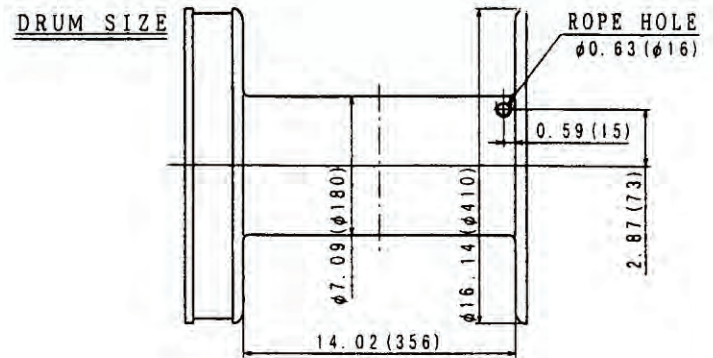
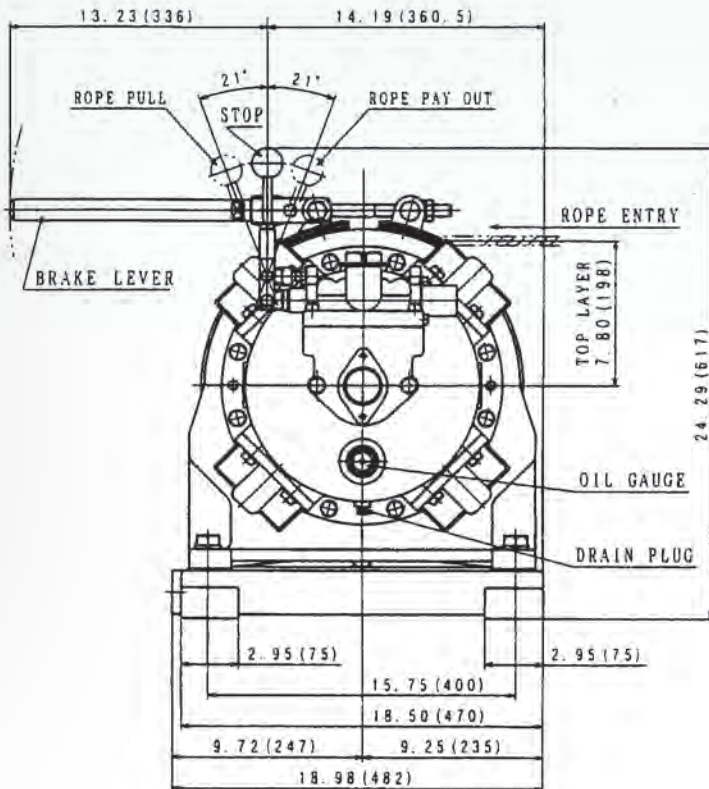
# Model MP-W20220LACMB

## 4400 lb. Long Drum Winch w/ Manual Brake

### SPECIFICATIONS (at Half Drum)

Motor Output	Capacity	Line Speed at Capacity	Cable Capacity	Weight w/o Rope	Avg. Air Consumption @ 90 psi
9.6 hp	4400 lbs.	62 ft./min.	7/16 in. x 950 ft. 1/2 in. x 750 ft.	632 lbs.	191 cfm

Drawing Dimensions in Inches (millimeters listed in brackets)



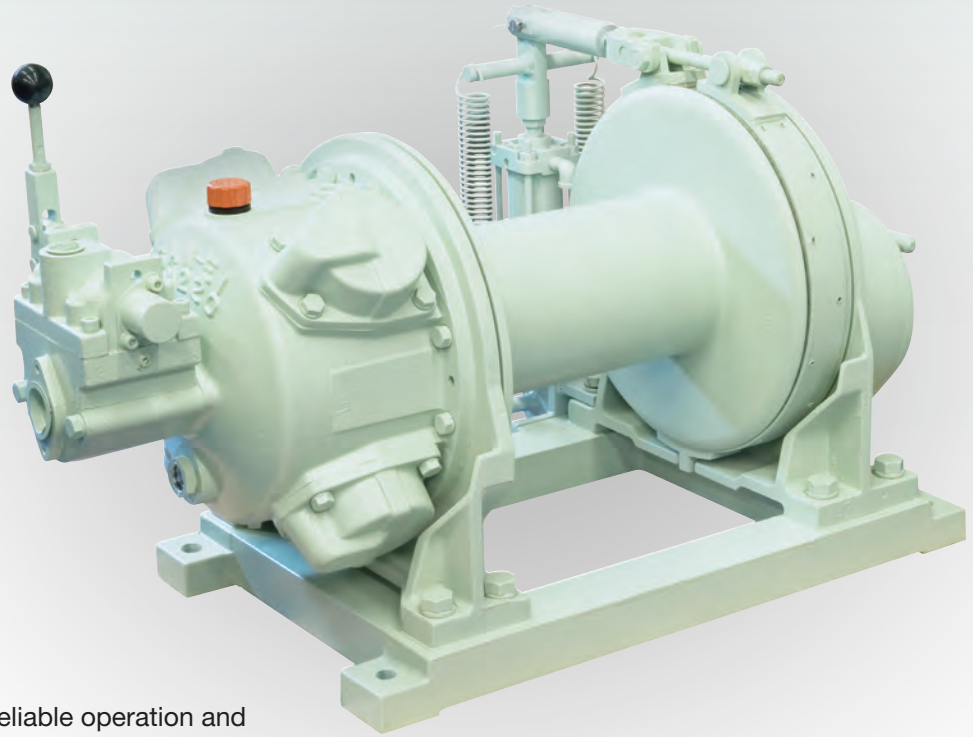
This equipment is not to be used for lifting, supporting or transporting people, or for lifting or supporting loads over people.



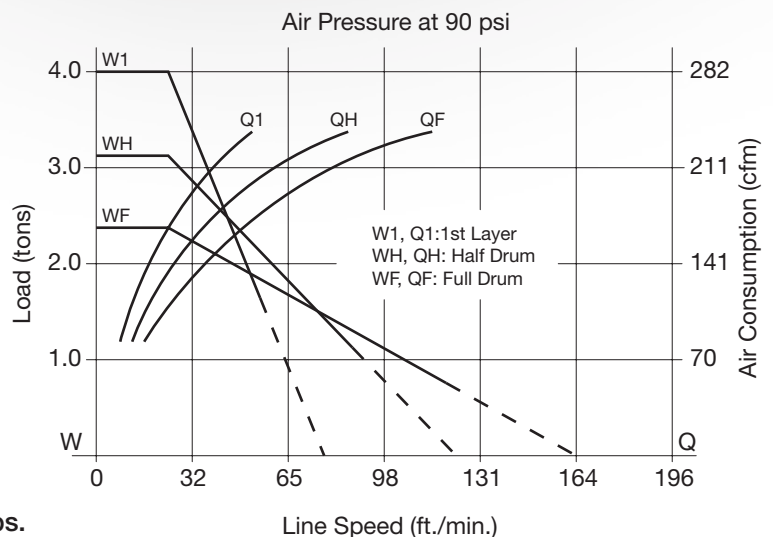


# Model MP-W20220LAAB

4400 lb. Long Drum Winch w/ Auto Brake



The MP-W20220 series tuggers offer reliable operation and controlled load placement in the most rigorous conditions. Featuring a 4400 lb. capacity, 4-piston motor design, the MP-W20220 series is available in short and long drum configurations. They are our most popular series of tuggers, due in part to being the most durable in the field. With a small foot print, this tugger can be mounted in many confined areas where maximum lifting and rope capacity is required.



## Specifications

Capacity ..... 4400 lbs.  
Line Speed at Capacity ..... 62 ft.  
Cable Capacity ..... 950 ft. of 7/16"  
750 ft. of 1/2"  
Weight w/o Rope ..... 654 lbs.  
Air Inlet Thread ..... 1"

This equipment is not to be used for lifting, supporting or transporting people, or for lifting or supporting loads over people.



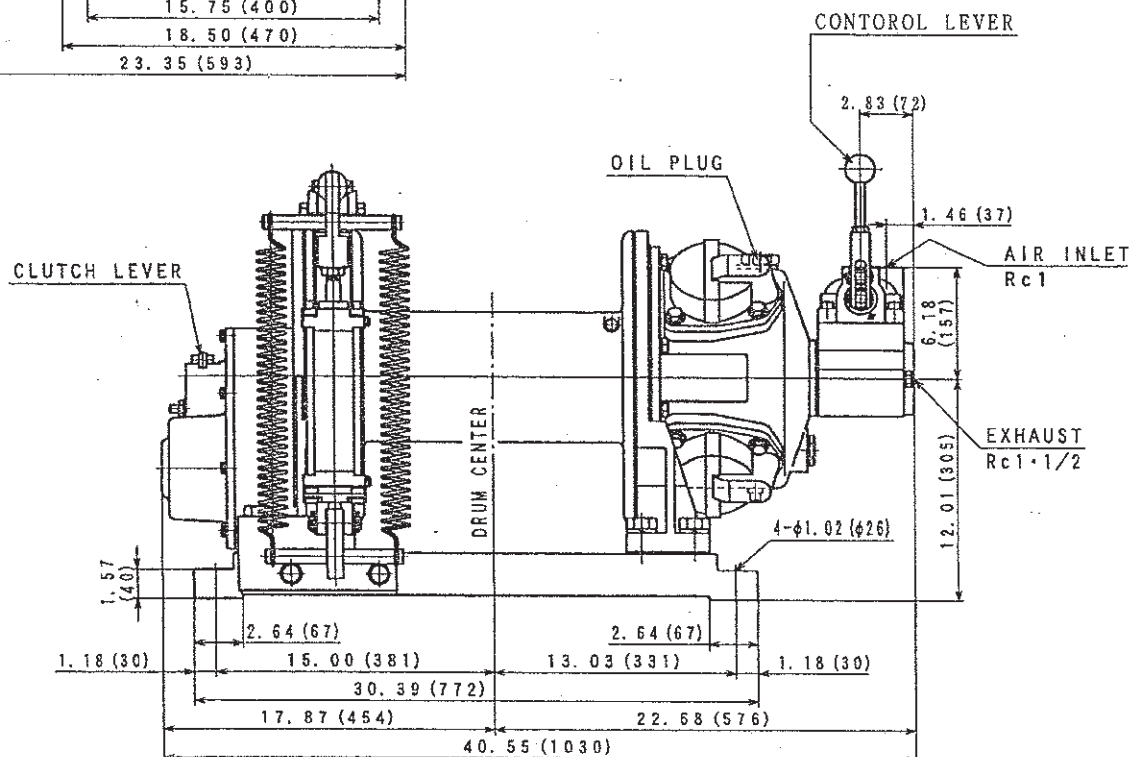
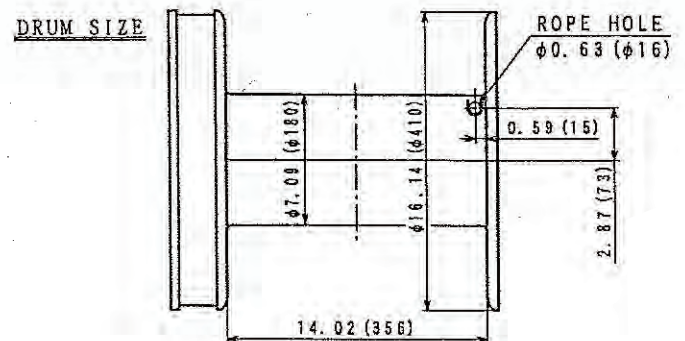
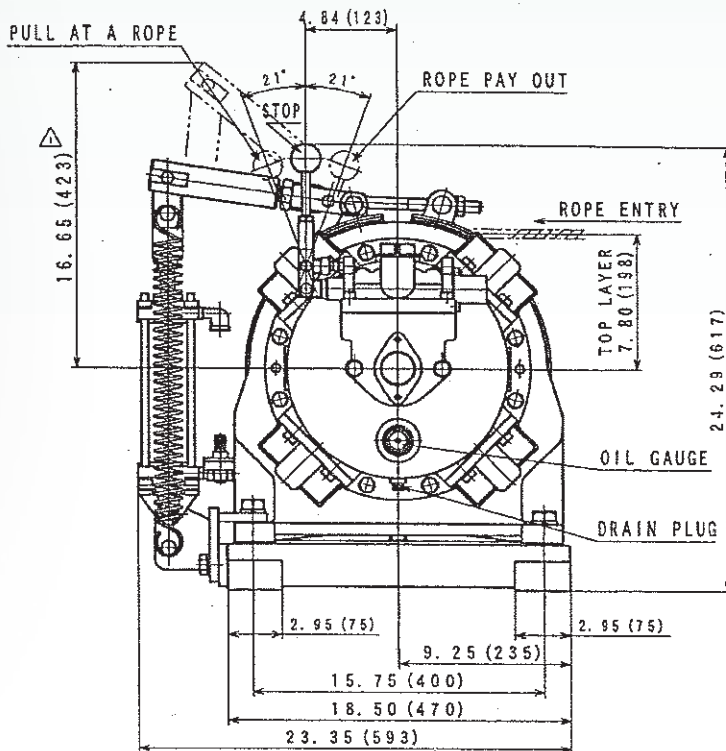
# Model MP-W20220LAAB

## 4400 lb. Long Drum Winch w/ Auto Brake

### SPECIFICATIONS (at Half Drum)

Motor Output	Capacity	Line Speed at Capacity	Cable Capacity	Weight w/o Rope	Avg. Air Consumption @ 90 psi
9.6 hp	4400 lbs.	62 ft./min.	7/16 in. x 950 ft. 1/2 in. x 750 ft.	654 lbs.	191 cfm

Drawing Dimensions in Inches (millimeters listed in brackets)

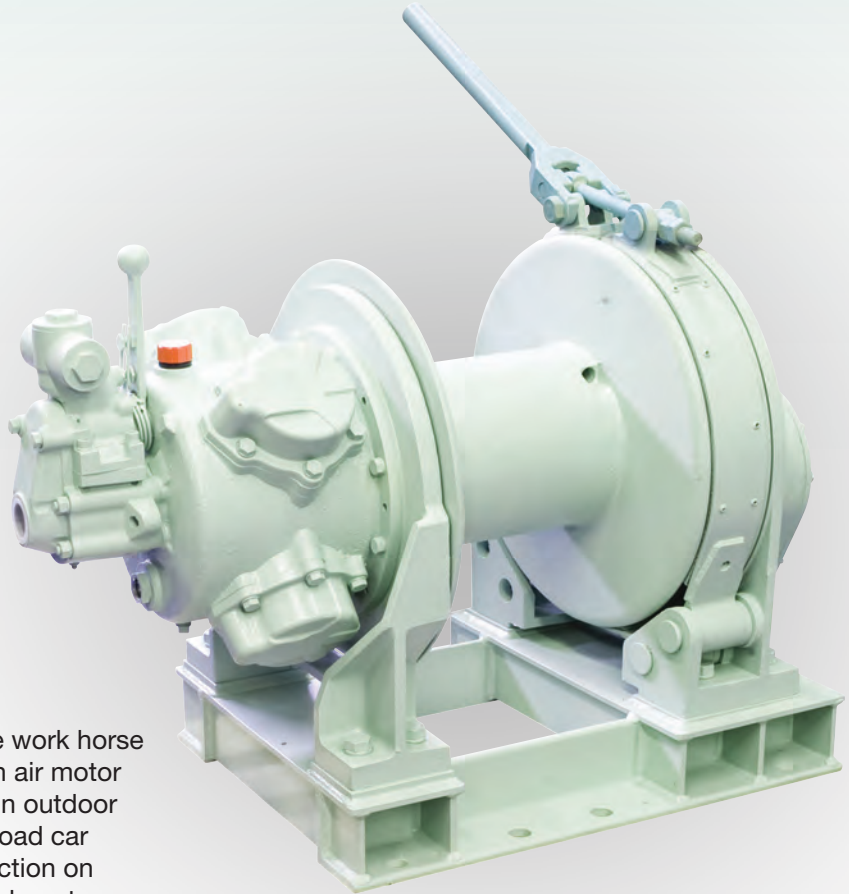


This equipment is not to be used for lifting, supporting or transporting people, or for lifting or supporting loads over people.



# Model MP-W3036SACMB

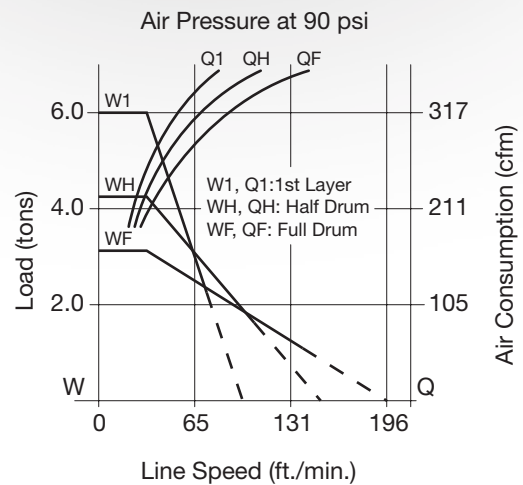
## 6600 lb. Short Drum Winch w/ Manual Brake



The MP-W3036 series tugger is considered the work horse of the San-Ei tugger line. With its large 4-piston air motor and rugged construction, this unit is preferred in outdoor applications such as oil platform work and railroad car moving applications. Extra heavy-duty construction on this unit delivers return on investment. Ideal for long term rental applications in a variety of inclement weather. Large footprint for dependable mounting.

### Specifications

Capacity ..... 6600 lbs.  
Line Speed at Capacity ..... 62 ft.  
Cable Capacity ..... 525 ft. of 5/8"  
Weight w/o Rope ..... 1035 lbs.  
Air Inlet Thread ..... 1-1/4"



This equipment is not to be used for lifting, supporting or transporting people, or for lifting or supporting loads over people.



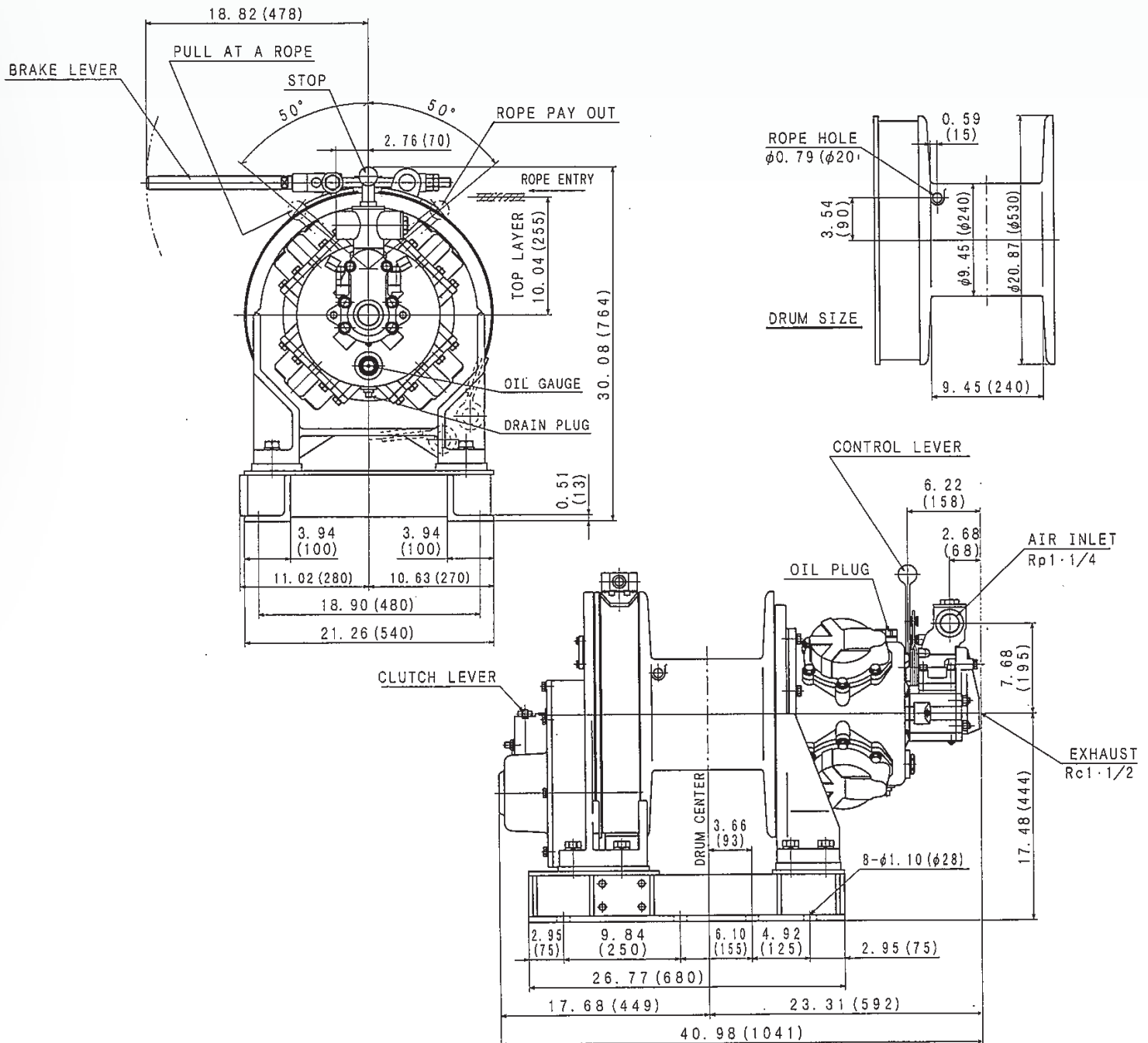
# Model MP-W3036SACMB

## 6600 lb. Short Drum Winch w/ Manual Brake

### SPECIFICATIONS (at Half Drum)

Motor Output	Capacity	Line Speed at Capacity	Cable Capacity	Weight w/o Rope	Avg. Air Consumption @ 90 psi
16.0 hp	6600 lbs.	121 ft./min.	5/8 in. x 525 ft.	1035 lbs.	318 cfm

Drawing Dimensions in Inches (millimeters listed in brackets)



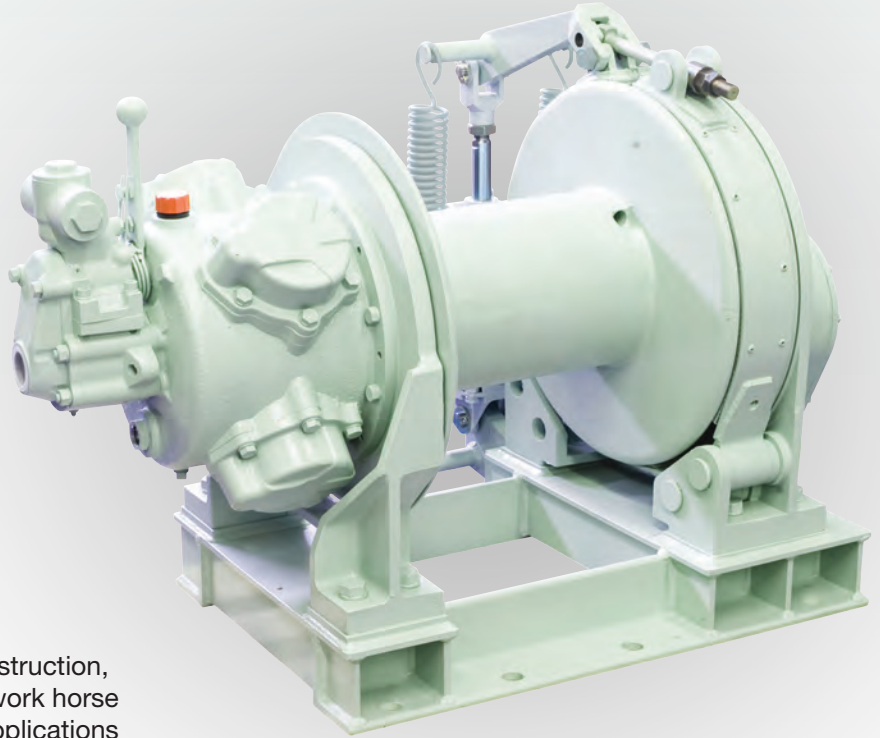
This equipment is not to be used for lifting, supporting or transporting people, or for lifting or supporting loads over people.





# Model MP-W3036SAAB

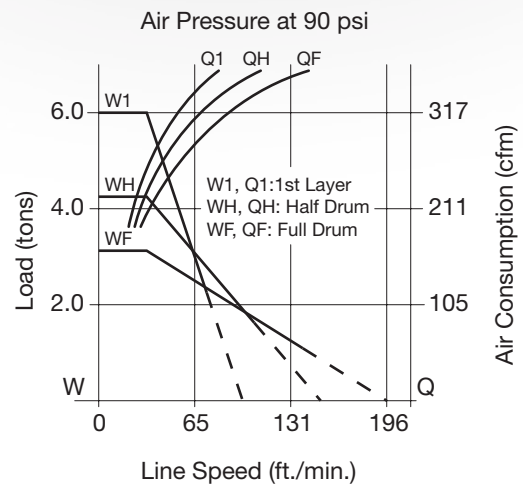
6600 lb. Short Drum Winch w/ Auto Brake



With its large 4-piston air motor and rugged construction, the MP-W3036 series tugger is considered the work horse of the San-Ei tugger line. Preferred in outdoor applications such as oil platform work and railroad car moving applications, its extra heavy-duty construction delivers return on investment and is ideal for long term rental applications in a variety of inclement weather. Features a large footprint for dependable mounting.

## Specifications

Capacity ..... 6600 lbs.  
Line Speed at Capacity ..... 62 ft.  
Cable Capacity ..... 525 ft. of 5/8"  
Weight w/o Rope ..... 1066 lbs.  
Air Inlet Thread ..... 1-1/4"



This equipment is not to be used for lifting, supporting or transporting people, or for lifting or supporting loads over people.



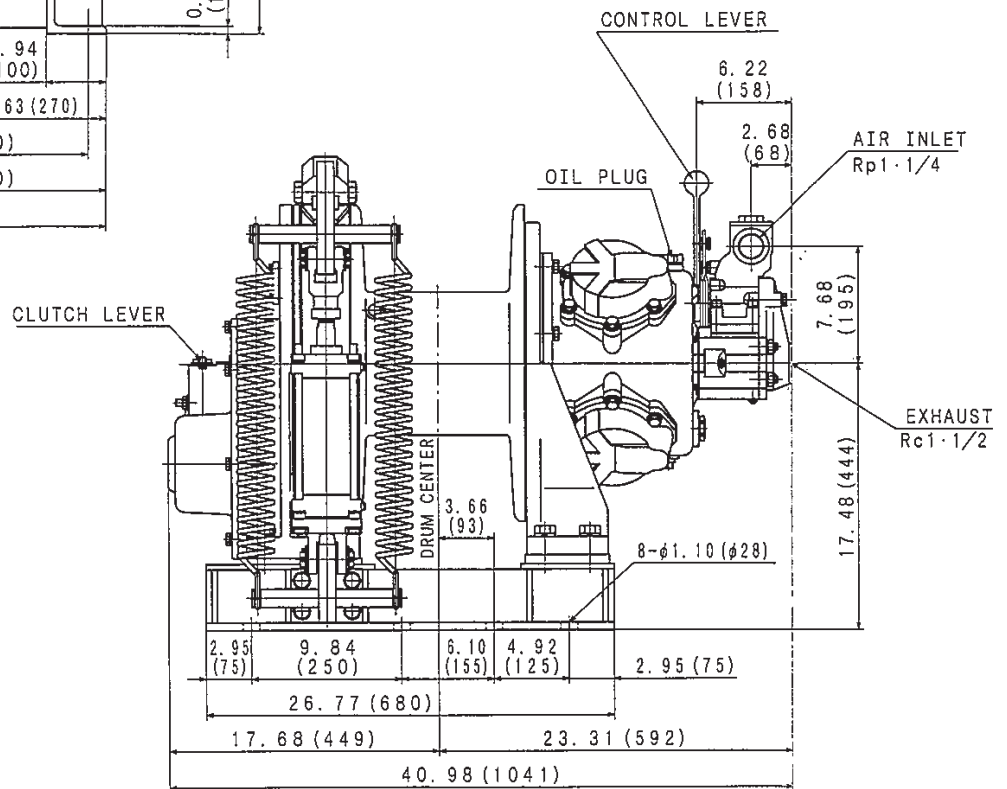
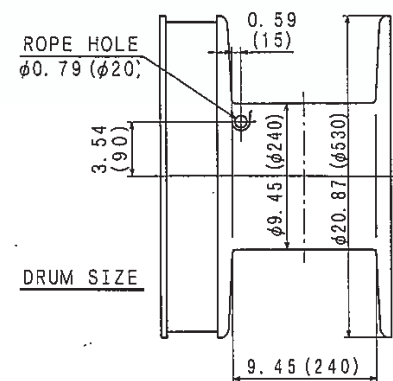
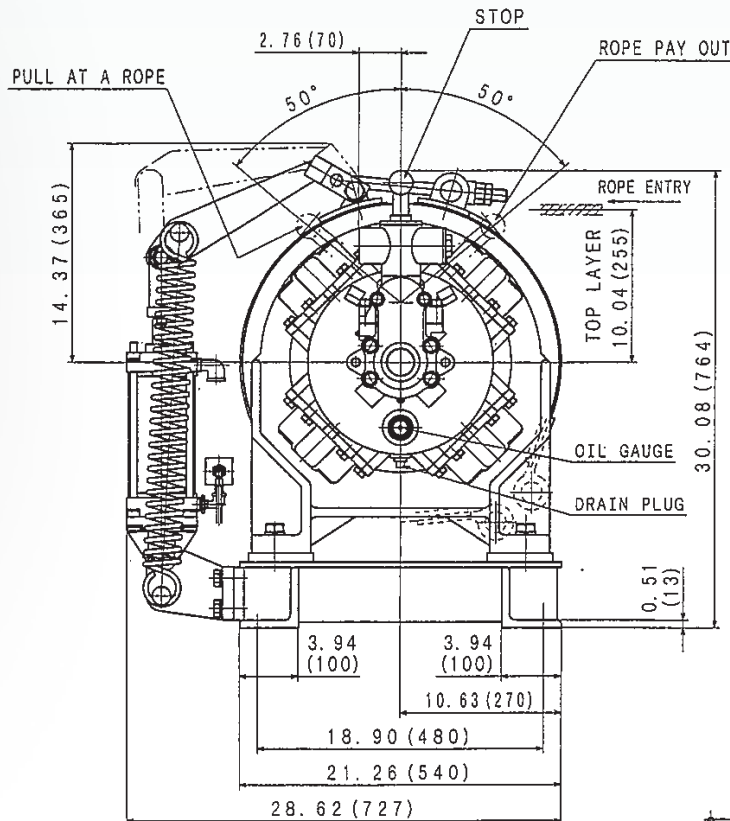
# Model MP-W3036SAAB

## 6600 lb. Short Drum Winch w/ Auto Brake

### SPECIFICATIONS (at Half Drum)

Motor Output	Capacity	Line Speed at Capacity	Cable Capacity	Weight w/o Rope	Avg. Air Consumption @ 90 psi
16.0 hp	6600 lbs.	62 ft./min.	5/8 in. x 525 ft.	1066 lbs.	318 cfm

### Drawing Dimensions in Inches (millimeters listed in brackets)



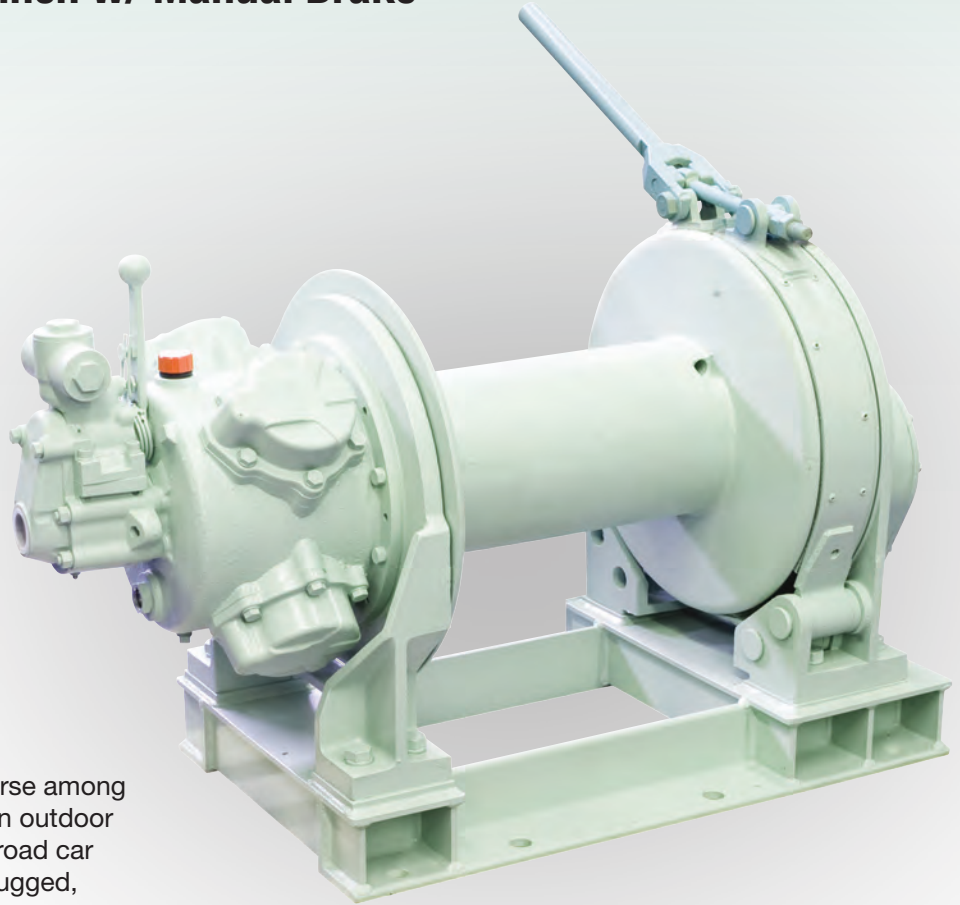
This equipment is not to be used for lifting, supporting or transporting people, or for lifting or supporting loads over people.



San-Ei Air Winches

# Model MP-W3036LACMB

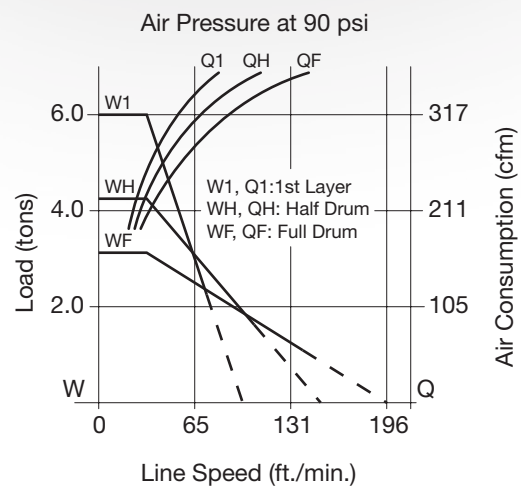
6600 lb. Long Drum Winch w/ Manual Brake



The MP-W3036 series tugger is a real work horse among the San-Ei tugger line; and they are preferred in outdoor applications such as oil platform work and railroad car moving. With its large 4-piston air motor and rugged, extra heavy-duty construction, this unit delivers return on investment. Ideal for long term rental applications in a variety of inclement weather. With a large footprint this is the tugger of choice where dependable mounting and operation is required.

## Specifications

Capacity ..... 6600 lbs.  
Line Speed at Capacity ..... 62 ft.  
Cable Capacity ..... 1050 ft. of 5/8"  
Weight w/o Rope ..... 1130 lbs.  
Air Inlet Thread ..... 1-1/4"



This equipment is not to be used for lifting, supporting or transporting people, or for lifting or supporting loads over people.



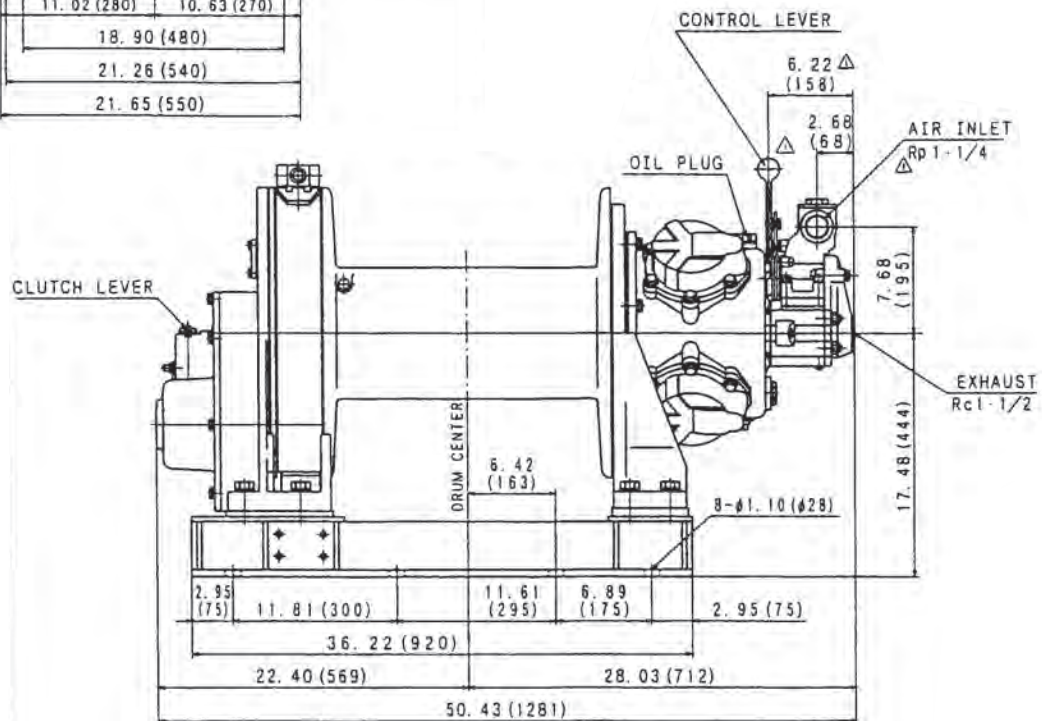
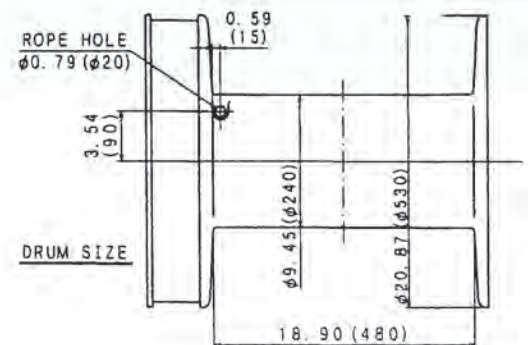
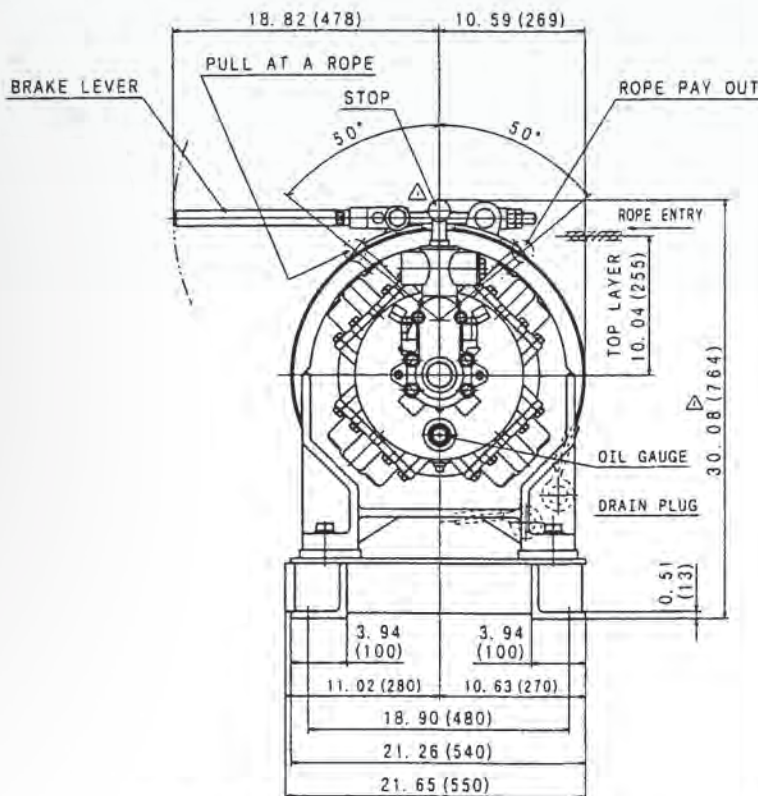
# Model MP-W3036LACMB

## 6600 lb. Long Drum Winch w/ Manual Brake

### SPECIFICATIONS (at Half Drum)

Motor Output	Capacity	Line Speed at Capacity	Cable Capacity	Weight w/o Rope	Avg. Air Consumption @ 90 psi
16.0 hp	6600 lbs.	62 ft./min.	5/8 in. x 1050 ft.	1030 lbs.	318 cfm

Drawing Dimensions in Inches (millimeters listed in brackets)



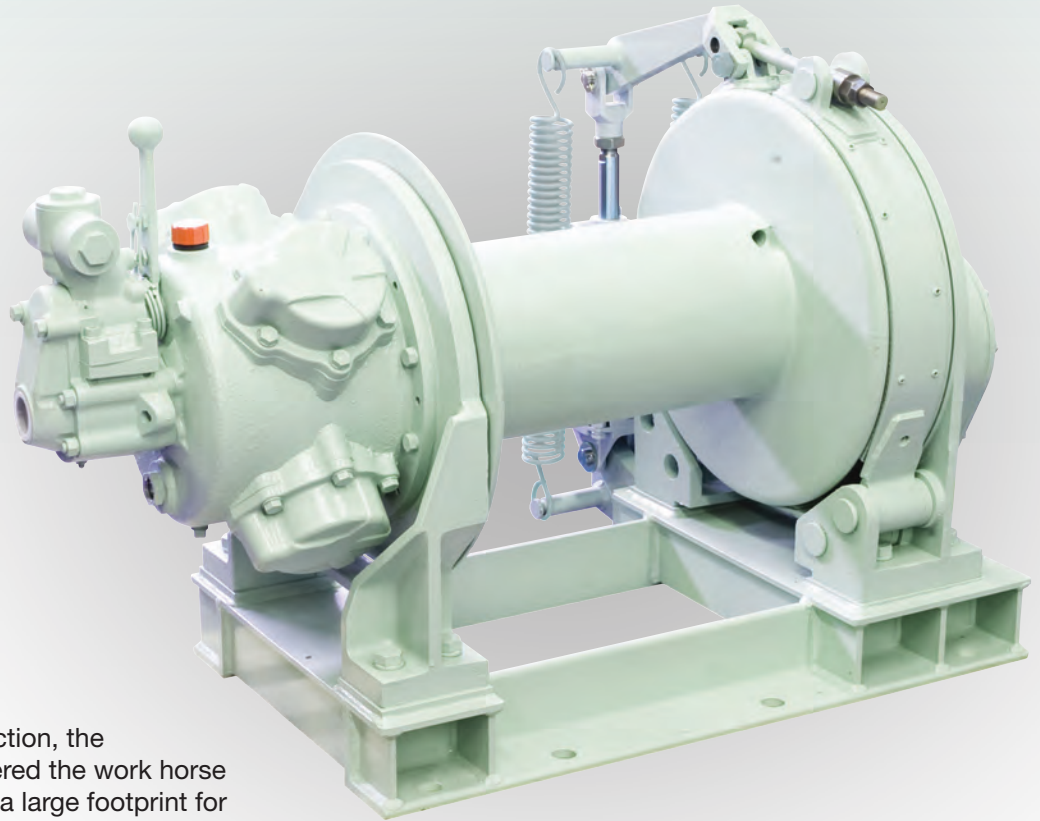
This equipment is not to be used for lifting, supporting or transporting people, or for lifting or supporting loads over people.





# Model MP-W3036LAAB

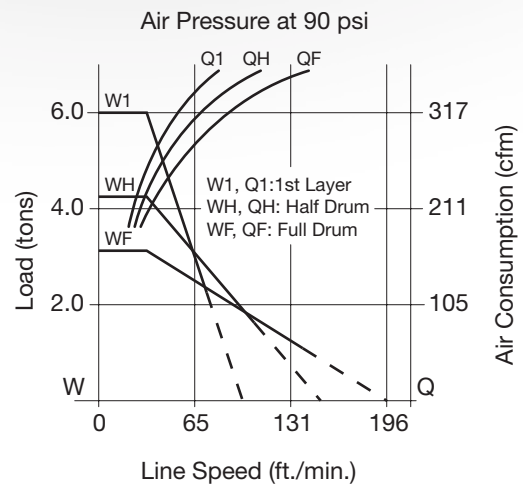
6600 lb. Long Drum Winch w/ Auto Brake



Built with extra heavy-duty construction, the MP-W3036 series tugger is considered the work horse of the San-Ei tugger line. Featuring a large footprint for dependable mounting, it is preferred above its competition for outdoor applications such as oil platform work and railroad car moving. With its large 4-piston air motor and rugged construction this unit delivers return on investment and is ideal for long term rental applications in a variety of inclement weather conditions.

## Specifications

Capacity ..... 6600 lbs.  
Line Speed at Capacity ..... 62 ft.  
Cable Capacity ..... 1050 ft. of 5/8"  
Weight w/o Rope ..... 1161 lbs.  
Air Inlet Thread ..... 1-1/4"



This equipment is not to be used for lifting, supporting or transporting people, or for lifting or supporting loads over people.



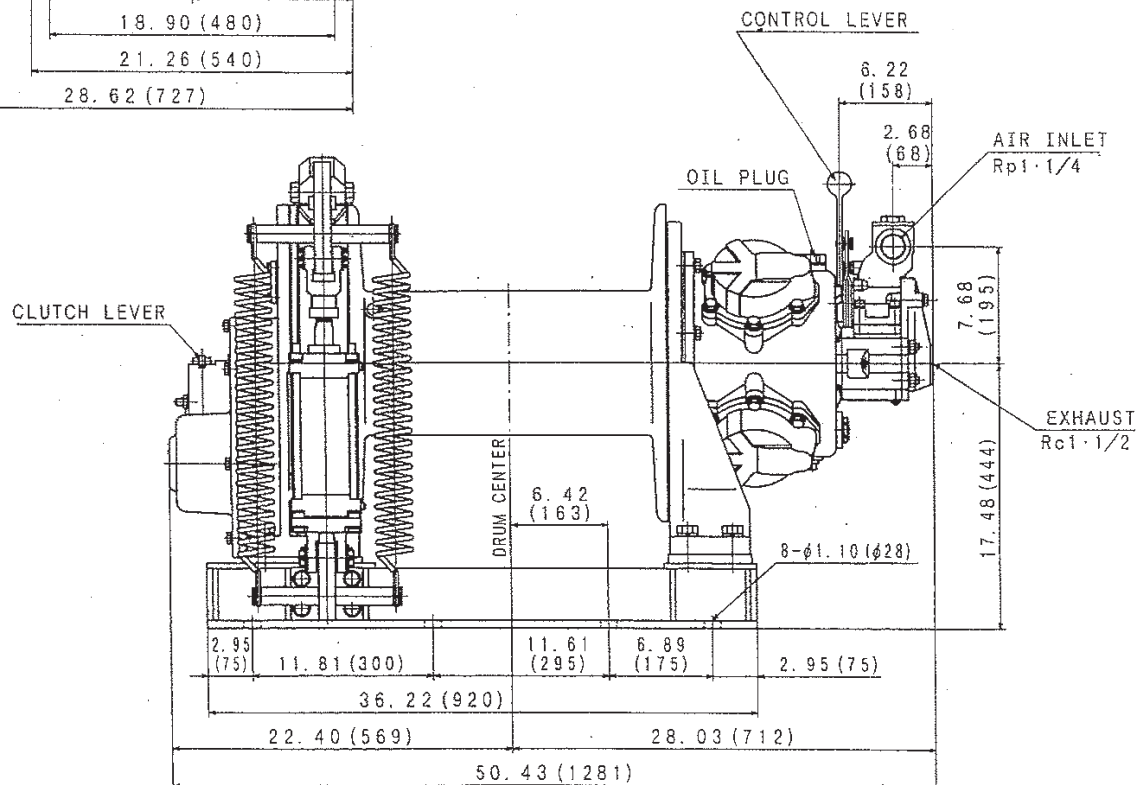
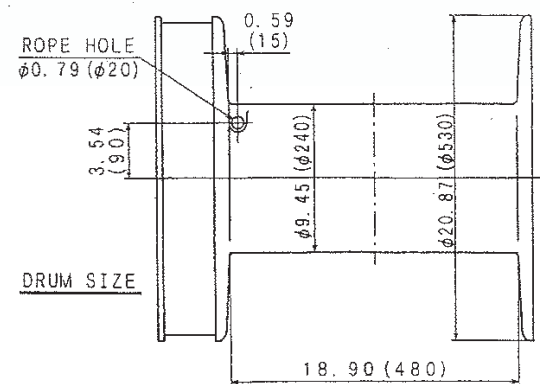
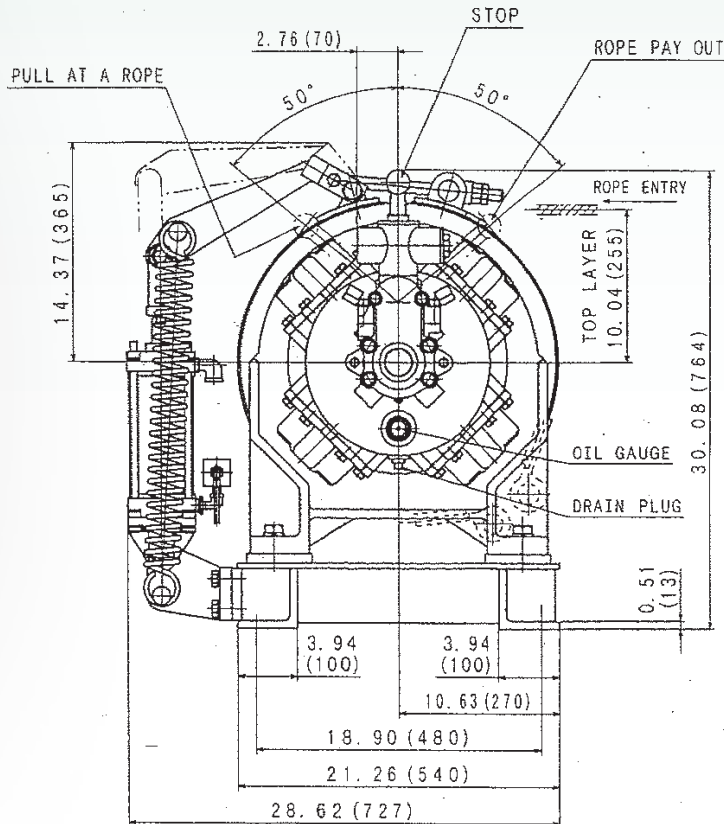
# Model MP-W3036LAAB

## 6600 lb. Long Drum Winch w/ Auto Brake

### SPECIFICATIONS (at Half Drum)

Motor Output	Capacity	Line Speed at Capacity	Cable Capacity	Weight w/o Rope	Avg. Air Consumption @ 90 psi
16.0 hp	6600 lbs.	62 ft./min.	5/8 in. x 1050 ft.	1161 lbs.	318 cfm

Drawing Dimensions in Inches (millimeters listed in brackets)



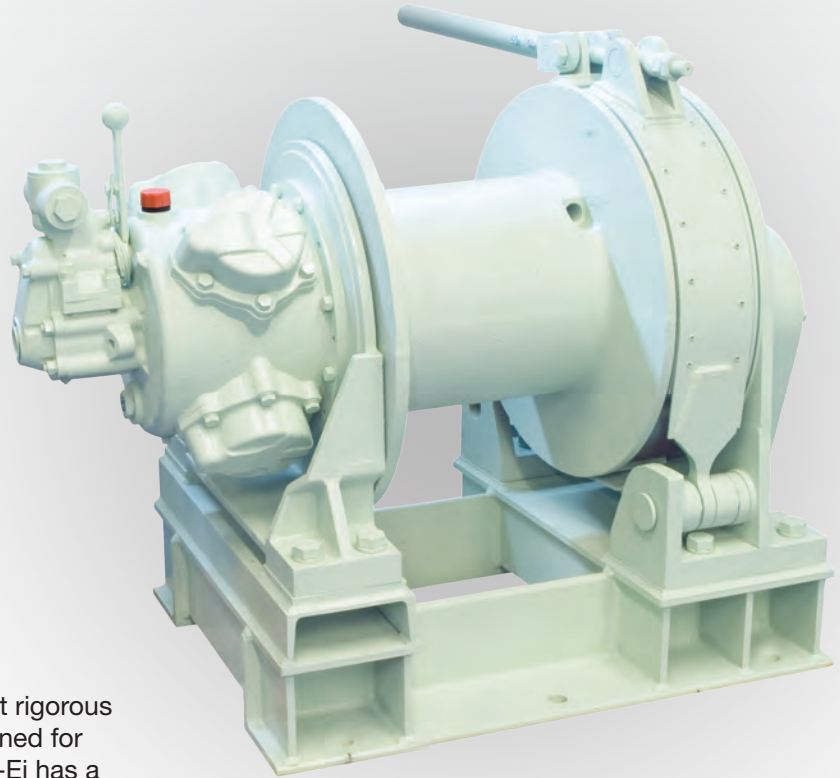
This equipment is not to be used for lifting, supporting or transporting people, or for lifting or supporting loads over people.



San-Ei Air Winches

# Model MP-W5036SACMB

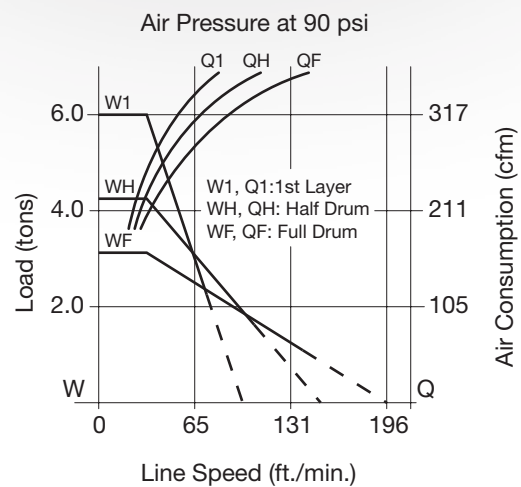
11000 lb. Short Drum Winch w/ Manual Brake



The MP-W5036 series tugger is ideal for the most rigorous applications when dependability is a must. Designed for long term rentals with minimal maintenance. San-Ei has a great history of supplying these tuggers to ship building, petrochem and other marine industry applications. Extra wide brake band ensures confident user operation and safe load delivery. Featuring San-Ei's 4-piston air motor and super-duty frame and base construction.

## Specifications

Capacity ..... 11000 lbs.  
Line Speed at Capacity ..... 36 ft.  
Cable Capacity ..... 500 ft. of 3/4"  
..... 375 ft. of 7/8"  
Weight w/o Rope ..... 1670 lbs.  
Air Inlet Thread ..... 1-1/4"



This equipment is not to be used for lifting, supporting or transporting people, or for lifting or supporting loads over people.



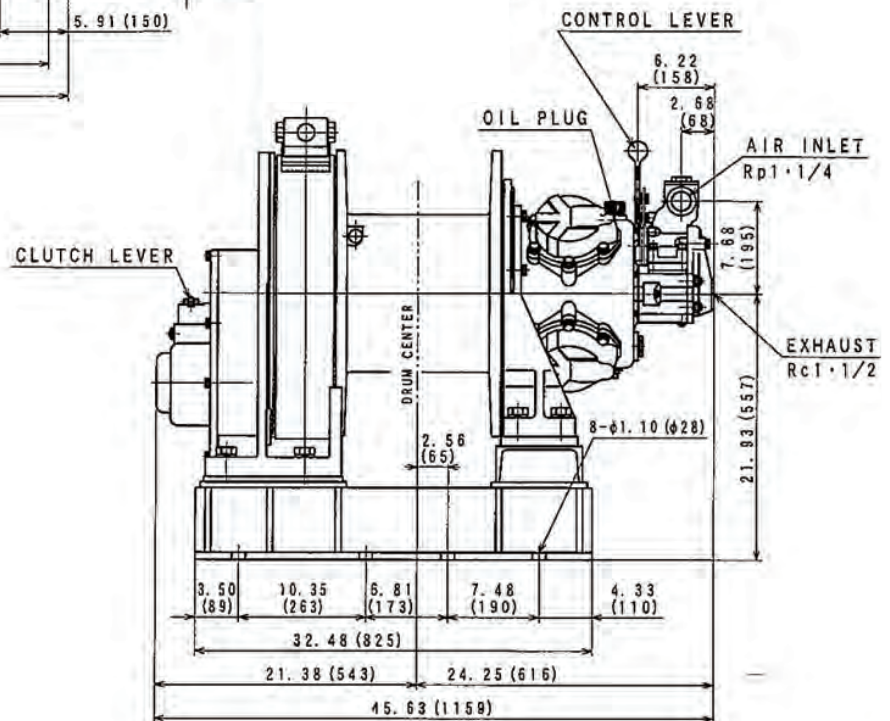
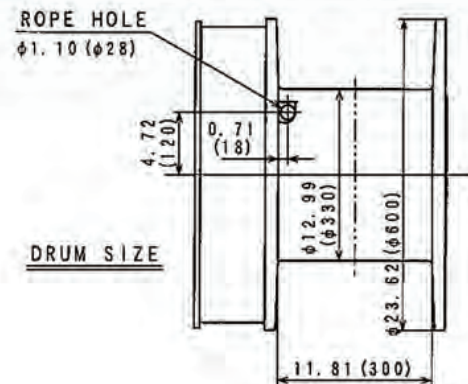
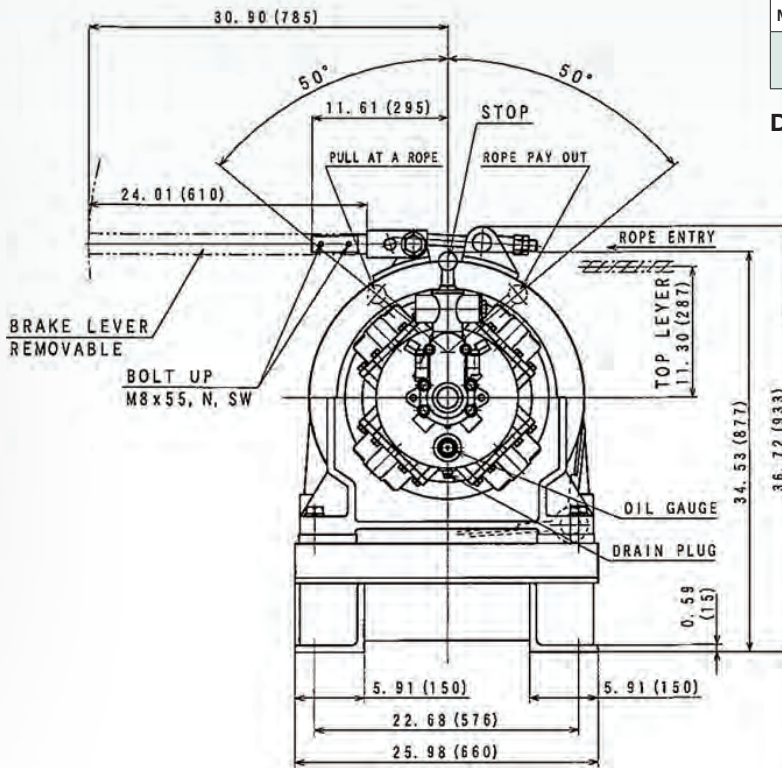
# Model MP-W5036SACMB

## 11000 lb. Short Drum Winch w/ Manual Brake

### SPECIFICATIONS (at Half Drum)

Motor Output	Capacity	Line Speed at Capacity	Cable Capacity	Weight w/o Rope	Avg. Air Consumption @ 90 psi
16.0 hp	11000 lbs.	36 ft./min.	3/4 in. x 500 ft. 7/8 in. x 375 ft.	1670 lbs.	318 cfm

Drawing Dimensions in Inches (millimeters listed in brackets)

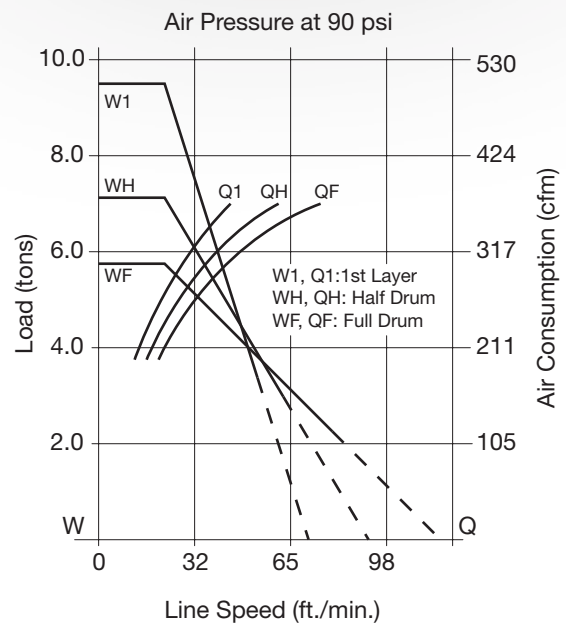
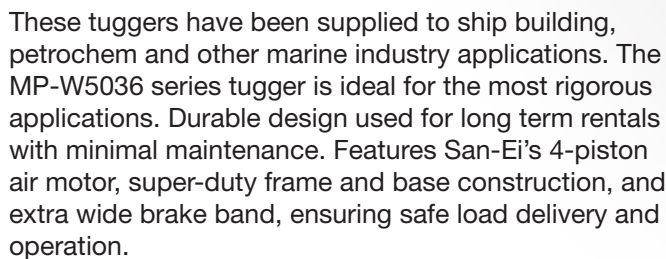


This equipment is not to be used for lifting, supporting or transporting people, or for lifting or supporting loads over people.





## 11000 lb. Short Drum Winch w/ Auto Brake



## Specifications

Capacity .....	11000 lbs.
Line Speed at Capacity .....	36 ft.
Cable Capacity .....	500 ft. of 3/4"
	375 ft. of 7/8"
Weight w/o Rope .....	1716 lbs.
Air Inlet Thread .....	1-1/4"

**This equipment is not to be used for lifting, supporting or transporting people, or for lifting or supporting loads over people.**



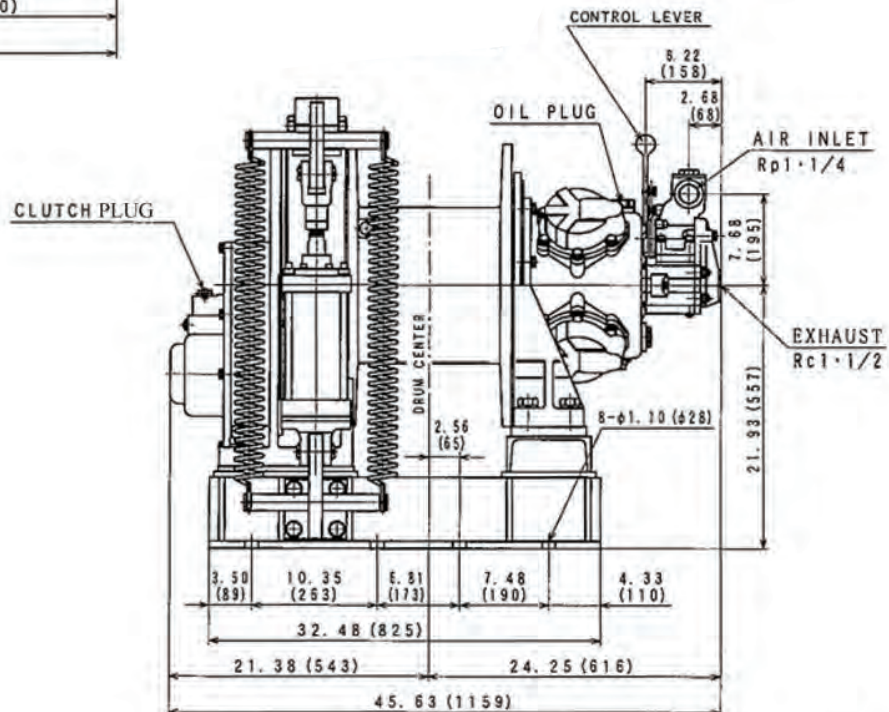
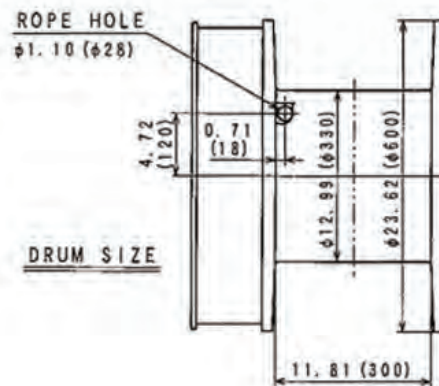
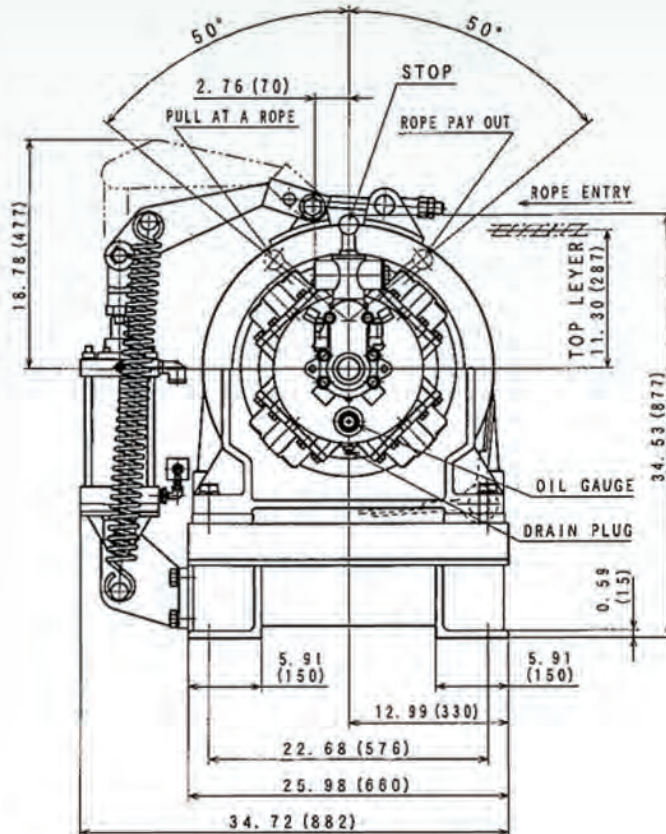
# Model MP-W5036SAAB

## 11000 lb. Short Drum Winch w/ Auto Brake

### SPECIFICATIONS (at Half Drum)

Motor Output	Capacity	Line Speed at Capacity	Cable Capacity	Weight w/o Rope	Avg. Air Consumption @ 90 psi
16.0 hp	11000 lbs.	36 ft./min.	3/4 in. x 500 ft. 7/8 in. x 375 ft.	1716 lbs.	318 cfm

Drawing Dimensions in Inches (millimeters listed in brackets)

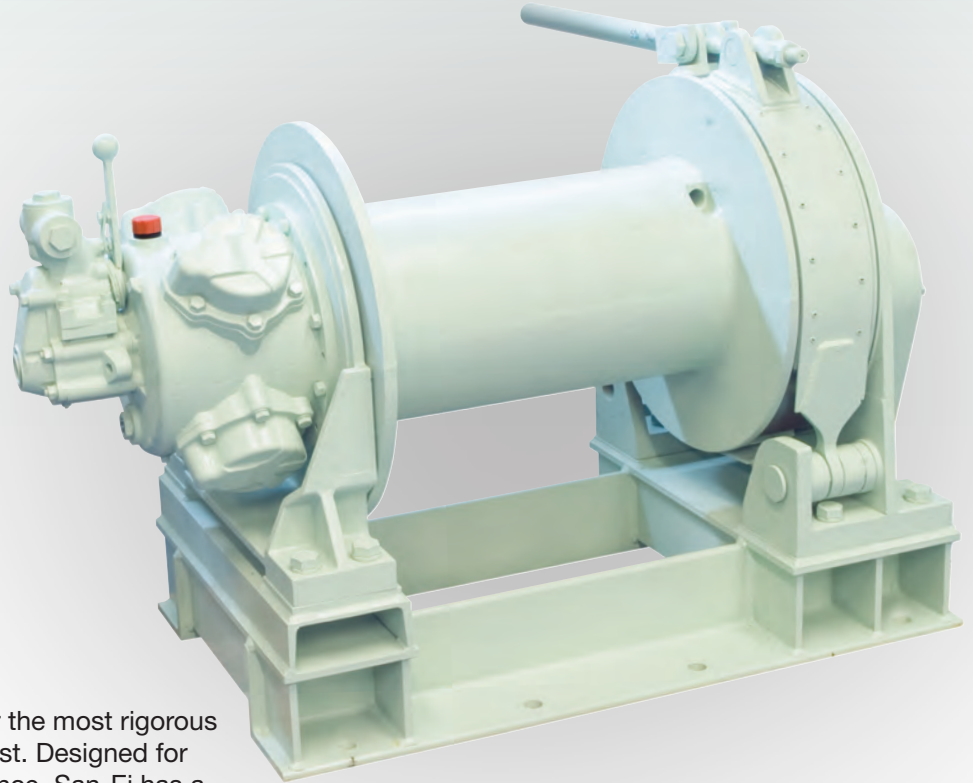


This equipment is not to be used for lifting, supporting or transporting people, or for lifting or supporting loads over people.



# Model MP-W5036LACMB

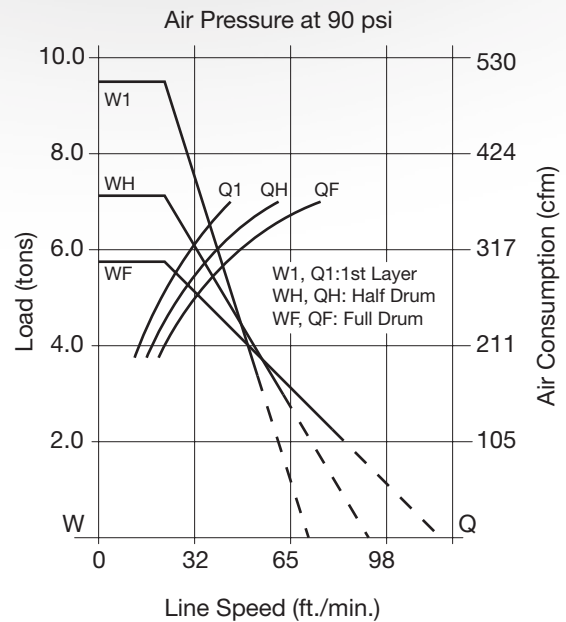
11000 lb. Long Drum Winch w/ Manual Brake



The MP-W5036 series tugger is ideal for the most rigorous applications when dependability is a must. Designed for long term rentals with minimal maintenance. San-Ei has a great history of supplying these tuggers to ship building, petrochem and other marine industry applications. Extra wide brake band ensures confident user operation and safe load delivery. Featuring San-Ei's 4-piston air motor and super-duty frame and base construction.

## Specifications

Capacity ..... 11000 lbs.  
Line Speed at Capacity ..... 36 ft.  
Cable Capacity ..... 1000 ft. of 3/4"  
750 ft. of 7/8"  
Weight w/o Rope ..... 1890 lbs.  
Air Inlet Thread ..... 1-1/4"



This equipment is not to be used for lifting, supporting or transporting people, or for lifting or supporting loads over people.





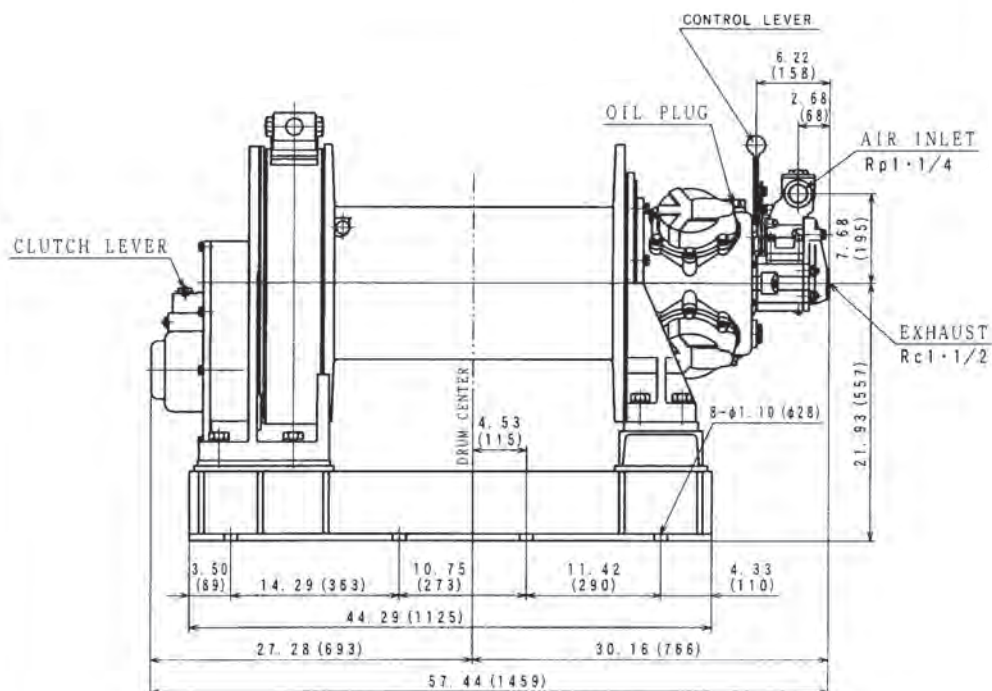
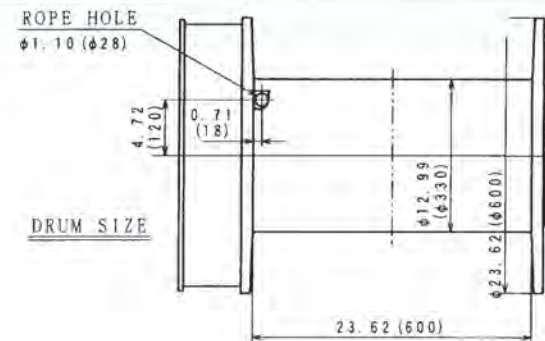
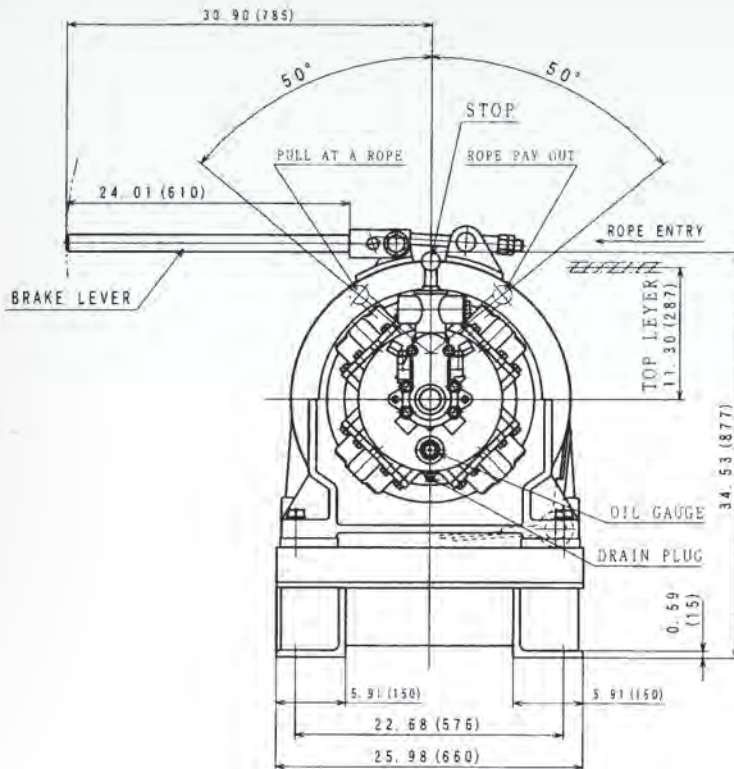
# Model MP-W5036LACMB

## 11000 lb. Long Drum Winch w/ Manual Brake

### SPECIFICATIONS (at Half Drum)

Motor Output	Capacity	Line Speed at Capacity	Cable Capacity	Weight w/o Rope	Avg. Air Consumption @ 90 psi
16.0 hp	11000 lbs.	36 ft./min.	3/4 in. x 1000 ft. 7/8 in. x 750 ft.	1890 lbs.	318 cfm

Drawing Dimensions in Inches (millimeters listed in brackets)



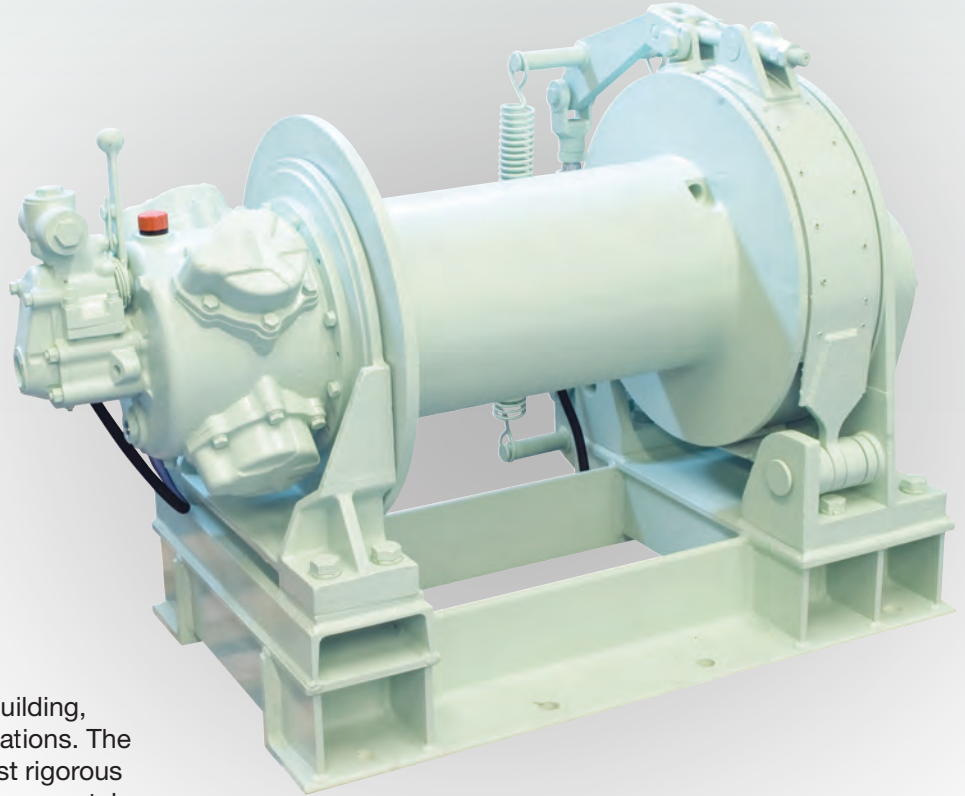
This equipment is not to be used for lifting, supporting or transporting people, or for lifting or supporting loads over people.





# Model MP-W5036LAAB

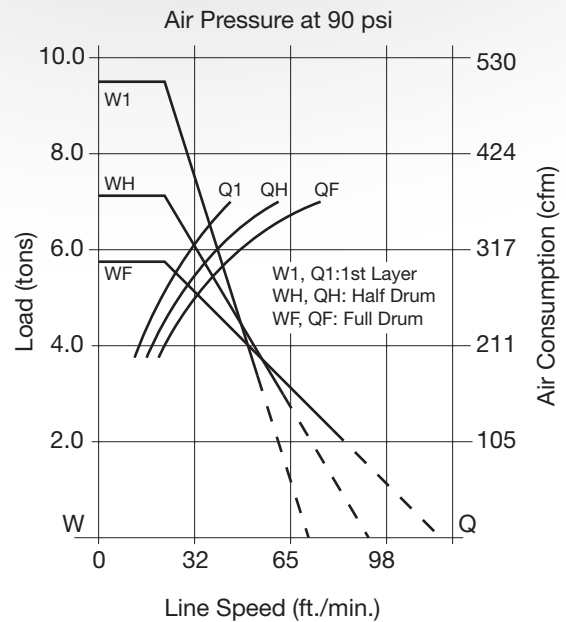
11000 lb. Long Drum Winch w/ Auto Brake



These tuggers have been supplied to ship building, petrochem and other marine industry applications. The MP-W5036 series tugger is ideal for the most rigorous applications. Durable design used for long term rentals with minimal maintenance. Features San-Ei's 4-piston air motor, super-duty frame and base construction, and extra wide brake band, ensuring safe load delivery and operation.

## Specifications

Capacity ..... 11000 lbs.  
Line Speed at Capacity ..... 36 ft.  
Cable Capacity ..... 1000 ft. of 3/4"  
..... 750 ft. of 7/8"  
Weight w/o Rope ..... 1923 lbs.  
Air Inlet Thread ..... 1-1/4"



This equipment is not to be used for lifting, supporting or transporting people, or for lifting or supporting loads over people.



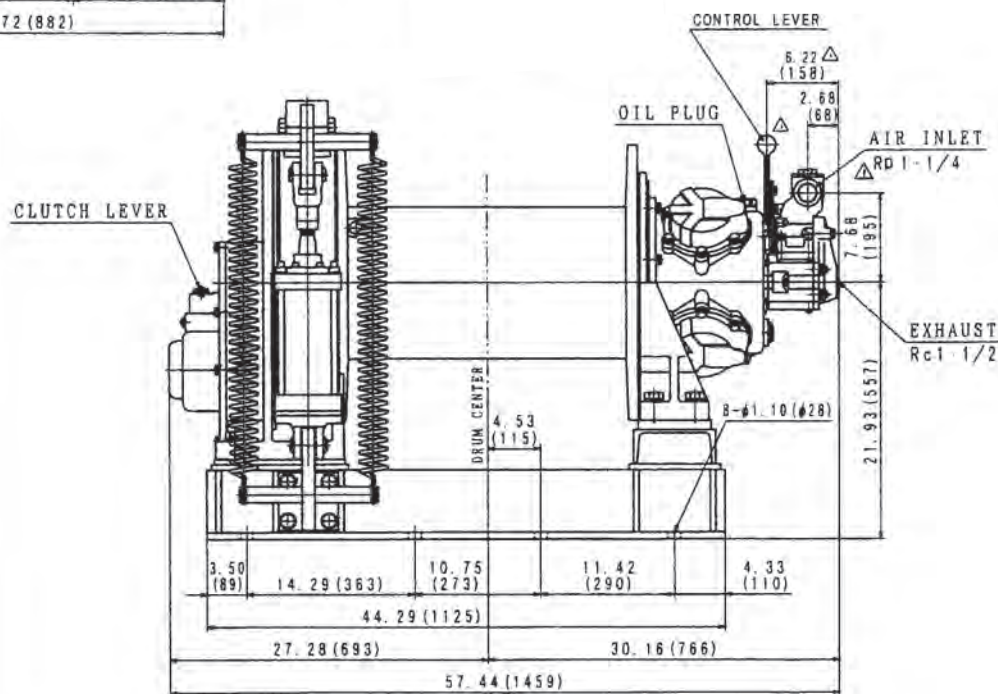
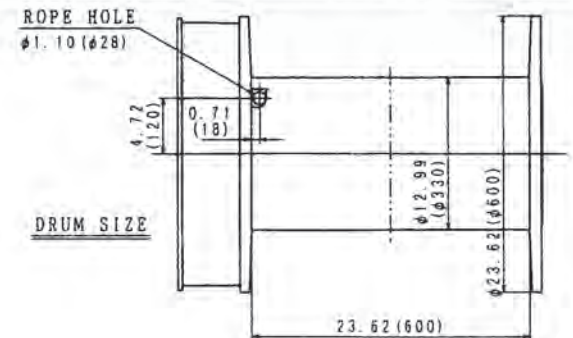
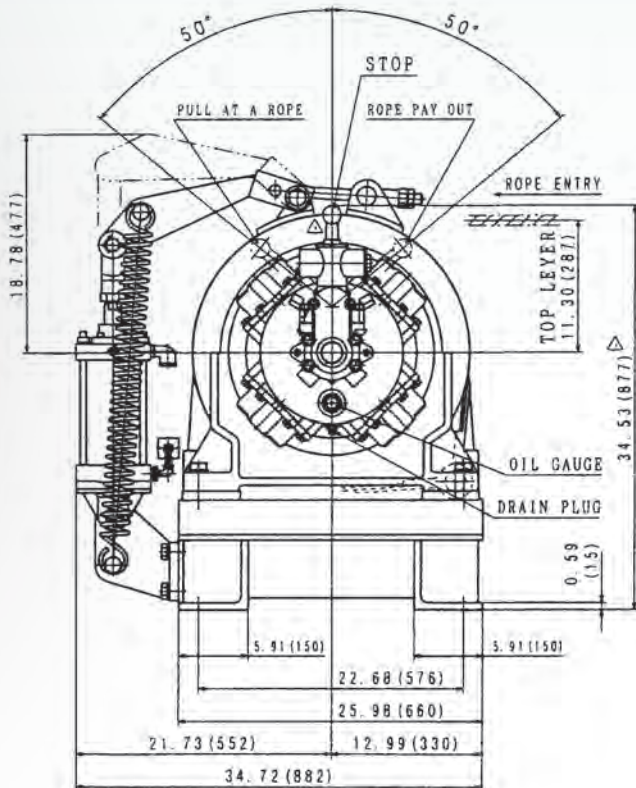
# Model MP-W5036LAAB

## 11000 lb. Long Drum Winch w/ Auto Brake

### SPECIFICATIONS (at Half Drum)

Motor Output	Capacity	Line Speed at Capacity	Cable Capacity	Weight w/o Rope	Avg. Air Consumption @ 90 psi
16.0 hp	11000 lbs.	36 ft./min.	3/4 in. x 1000 ft. 7/8 in. x 750 ft.	1923 lbs.	318 cfm

Drawing Dimensions in Inches (millimeters listed in brackets)



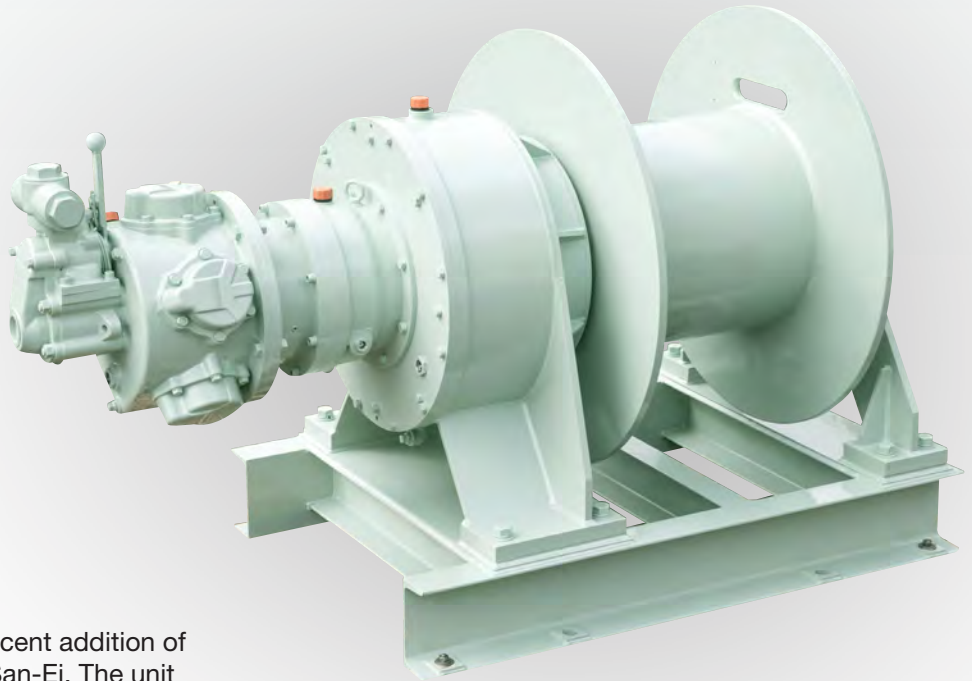
This equipment is not to be used for lifting, supporting or transporting people, or for lifting or supporting loads over people.



San-Ei Air Winches

# Model MP-AH45-100-S1H

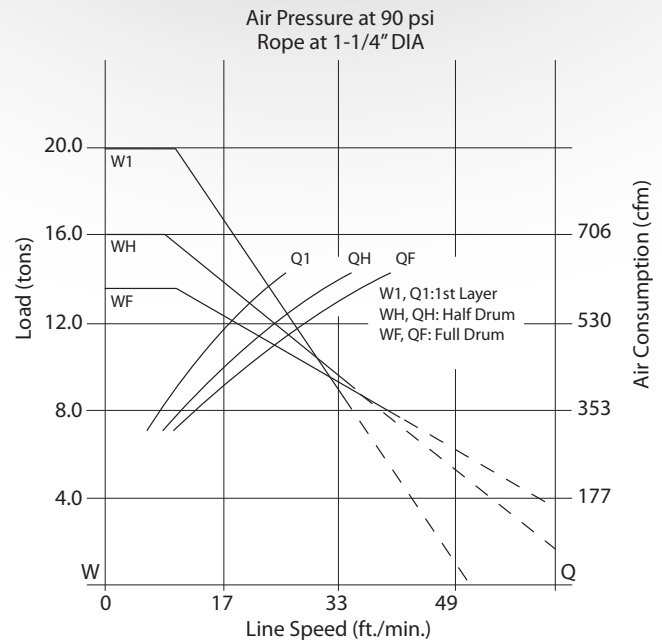
22000 lb. Standard Drum Winch w/ Auto Brake



The MP-AH45 series tugger is the most recent addition of the super-duty line of tuggers offered by San-Ei. The unit features a 5 piston air motor and a sealed dry disc brake system for the most extremely rigorous applications. It is designed for long term rentals with minimum maintenance. This unit would be ideal for ship building, petrochem and other large capacity marine applications. This tugger will handle any application put in front of it.

## Specifications

Capacity .....22,000 lbs.  
Line Speed at Capacity .....27 ft./min  
Cable Capacity .....853 ft. of 1-1/4"  
Weight w/o Rope .....3375 lbs.  
Air Inlet Thread .....2"



This equipment is not to be used for lifting, supporting or transporting people, or for lifting or supporting loads over people.

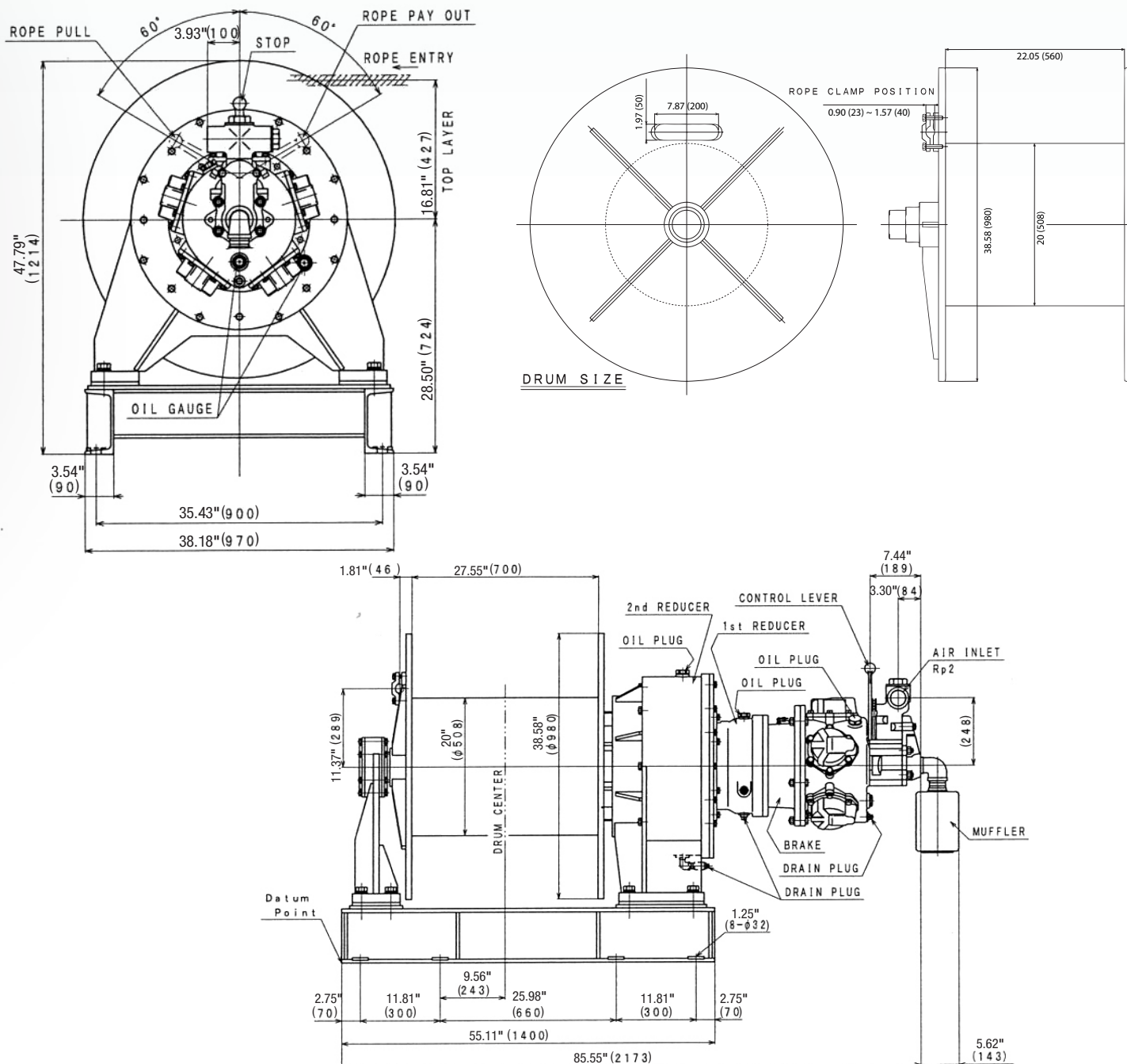
# Model MP-AH45-100-S1H

## 22000 lb. Standard Drum Winch w/ Auto Brake

### SPECIFICATIONS (at Half Drum)

Motor Output	Capacity	Line Speed at Capacity	Cable Capacity	Weight w/o Rope	Avg. Air Consumption @ 90 psi
23.0 hp	22000 lbs.	27 ft./min.	1-1/4 in. x 853 ft.	3375 lbs.	600 cfm

**Drawing Dimensions in Inches (millimeters listed in brackets)**



**This equipment is not to be used for lifting, supporting or transporting people, or for lifting or supporting loads over people.**





# Guards & Pendant Controls



**Drum Guards**

Part No.	Drum	Fits Tool Model No.
E302-104G	Short	MP-W05 Series
E398-001G	Short	MP-W10220S Series MP-W20220S Series
E398-003G	Long	MP-W10220L Series MP-W20220L Series
E398-005G	Short	MP-W3036S Series
E398-007G	Long	MP-W3036L Series
E305-011G	Short	MP-W5036S Series
E305-013G	Long	MP-W5036L Series
E305-015G	Standard	MP-AH45-100-S1H Series

Notice: Do not lift tugger by guards. Guards were designed to prevent entanglement.



**MP-W05AA3SACMBG**  
Tugger w/ Guard

**MP-W20220SPAB**  
Tugger w/ Pendant



## Complete Model Reference

Model Description	Standard Model No.	Model No. w/ Pendant	Model No. w/ Guard	Model No. w/ Pendant & Guard
1100 lb., Short Drum, Manual Brake	MP-W05AA3SACMB	–	MP-W05AA3SACMBG	–
1100 lb., Short Drum, Auto Brake	MP-W05AA3SAAB	MP-W05AA3SPAB	MP-W05AA3SAABG	MP-W05AA3SPABG
2200 lb., Short Drum, Manual Brake	MP-W10220SACMB	–	MP-W10220SACMBG	–
2200 lb., Short Drum, Auto Brake	MP-W10220SAAB	MP-W10220SPAB	MP-W10220SAABG	MP-W10220SPABG
2200 lb., Long Drum, Manual Brake	MP-W10220LACMB	–	MP-W10220LACMBG	–
2200 lb., Long Drum, Auto Brake	MP-W10220LAAB	MP-W10220LPAB	MP-W10220LAABG	MP-W10220LPABG
4400 lb., Short Drum, Manual Brake	MP-W20220SACMB	–	MP-W20220SACMBG	–
4400 lb., Short Drum, Auto Brake	MP-W20220SAAB	MP-W20220SPAB	MP-W20220SAABG	MP-W20220SPABG
4400 lb., Long Drum, Manual Brake	MP-W20220LACMB	–	MP-W20220LACMBG	–
4400 lb., Long Drum, Auto Brake	MP-W20220LAAB	MP-W20220LPAB	MP-W20220LAABG	MP-W20220LPABG
6600 lb., Short Drum, Manual Brake	MP-W3036SACMB	–	MP-W3036SACMBG	–
6600 lb., Short Drum, Auto Brake	MP-W3036SAAB	MP-W3036SPAB	MP-W3036SAABG	MP-W3036SPABG
6600 lb., Long Drum, Manual Brake	MP-W3036LACMB	–	MP-W3036LACMBG	–
6600 lb., Long Drum, Auto Brake	MP-W3036LAAB	MP-W3036LPAB	MP-W3036LAABG	MP-W3036LPABG
11000 lb., Short Drum, Manual Brake	MP-W5036SACMB	–	MP-W5036SACMBG	–
11000 lb., Short Drum, Auto Brake	MP-W5036SAAB	MP-W5036SPAB	MP-W5036SAABG	MP-W5036SPABG
11000 lb., Long Drum, Manual Brake	MP-W5036LACMB	–	MP-W5036LACMBG	–
11000 lb., Long Drum, Auto Brake	MP-W5036LAAB	MP-W5036LPAB	MP-W5036LAABG	MP-W5036LPABG
22000 lb., Standard Drum, Auto Brake	MP-AH45-100-S1H	MP-AH45-100-S1PH	MP-AH45-100-S1HG	MP-AH45-100-S1PHG

## Pendant / Remote Control Retro-fit Kits Available.

This equipment is not to be used for lifting, supporting or transporting people, or for lifting or supporting loads over people.

# Accessories

## Exhaust Mufflers

Part No.	Size	Fits Tool Model No.
DM3-MFLRKIT	3/4" NPT	MP-W05 Series
DM220-MFLRKIT	1-1/2" NPT	MP-W10220 Series MP-W20220 Series
DM36-MFLRKIT	1-1/2" NPT	MP-W3036 Series MP-W5036 Series
DM45-MFLRKIT	2" NPT	MP-AH45 Series

DM3-MFLRKIT



DM220-MFLRKIT



DM45-MFLRKIT



## Filter / Lubricator Kits

Part No.	Size	Fits Tool Model No.
S14590-3/4	3/4" NPT	MP-W05 Series
S14590-1	1" NPT	MP-W10220S Series MP-W10220L Series MP-W20220S Series MP-W20220L Series
S14590-1 1/4	1-1/4" NPT	MP-W3036S Series MP-W3036L Series MP-W5036S Series MP-W5036L Series
S14590-2	2" NPT	MP-AH45 Series

S14590-1



S14590-1 1/4



W05LSCAB



W20LSCAB



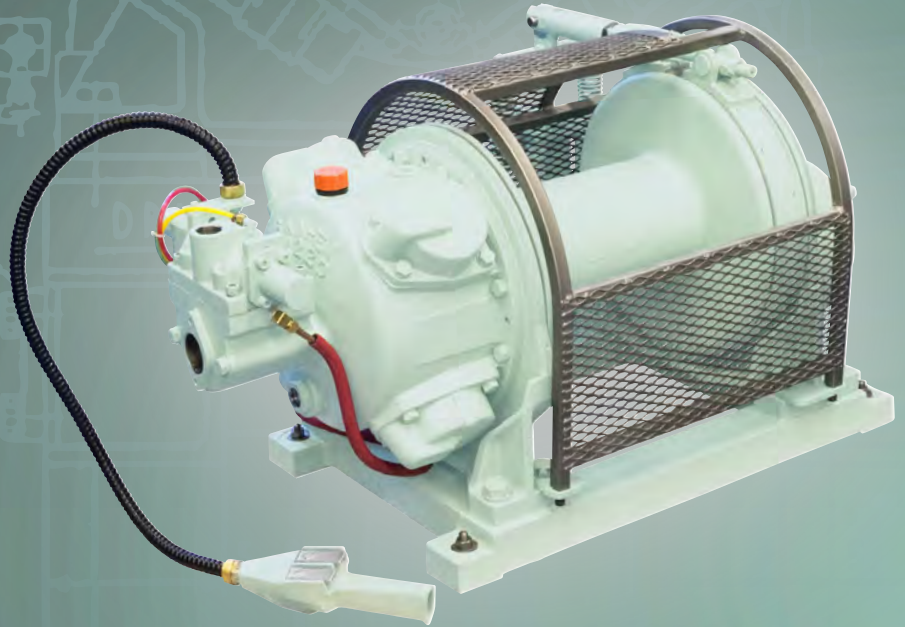
W50LSCAB

## Support Cages

Part No.	Drum/Brake	Fits Tool Model No.
W05SSCMB	Short/Manual	MP-W05 Manual Brake Series
W05SSCAB	Short/Auto	MP-W05 Auto Brake Series
W20SSCMB	Short/Manual	MP-W10220S Manual Brake Series, MP-W20220S Manual Brake Series
W20SSCAB	Short/Auto	MP-W10220S Auto Brake Series, MP-W20220S Auto Brake Series
W20LSCMB	Long/Manual	MP-W10220L Manual Brake Series, MP-W20220L Manual Brake Series
W20LSCAB	Long/Auto	MP-W10220L Auto Brake Series, MP-W20220L Auto Brake Series
W30SSCMB	Short/Manual	MP-W3036S Manual Brake Series
W30SSCAB	Short/Auto	MP-W3036S Auto Brake Series
W30LSCMB	Long/Manual	MP-W3036L Manual Brake Series
W30LSCAB	Long/Auto	MP-W3036L Auto Brake Series
W50SSCMB	Short/Manual	MP-W5036S Manual Brake Series
W50SSCAB	Short/Auto	MP-W5036S Auto Brake Series
W50LSCMB	Long/Manual	MP-W5036L Manual Brake Series
W50LSCAB	Long/Auto	MP-W5036L Auto Brake Series
AH45SSCAB	Std/Auto	MP-AH45-100-S1H Series

This equipment is not to be used for lifting, supporting or transporting people, or for lifting or supporting loads over people.





# MICHIGAN PNEUMATIC TOOL

## Air Winches

6850 Middlebelt Rd. • PO Box 906  
Romulus, MI 48174-7406

© 2018 Michigan Pneumatic® Tool, Inc.

